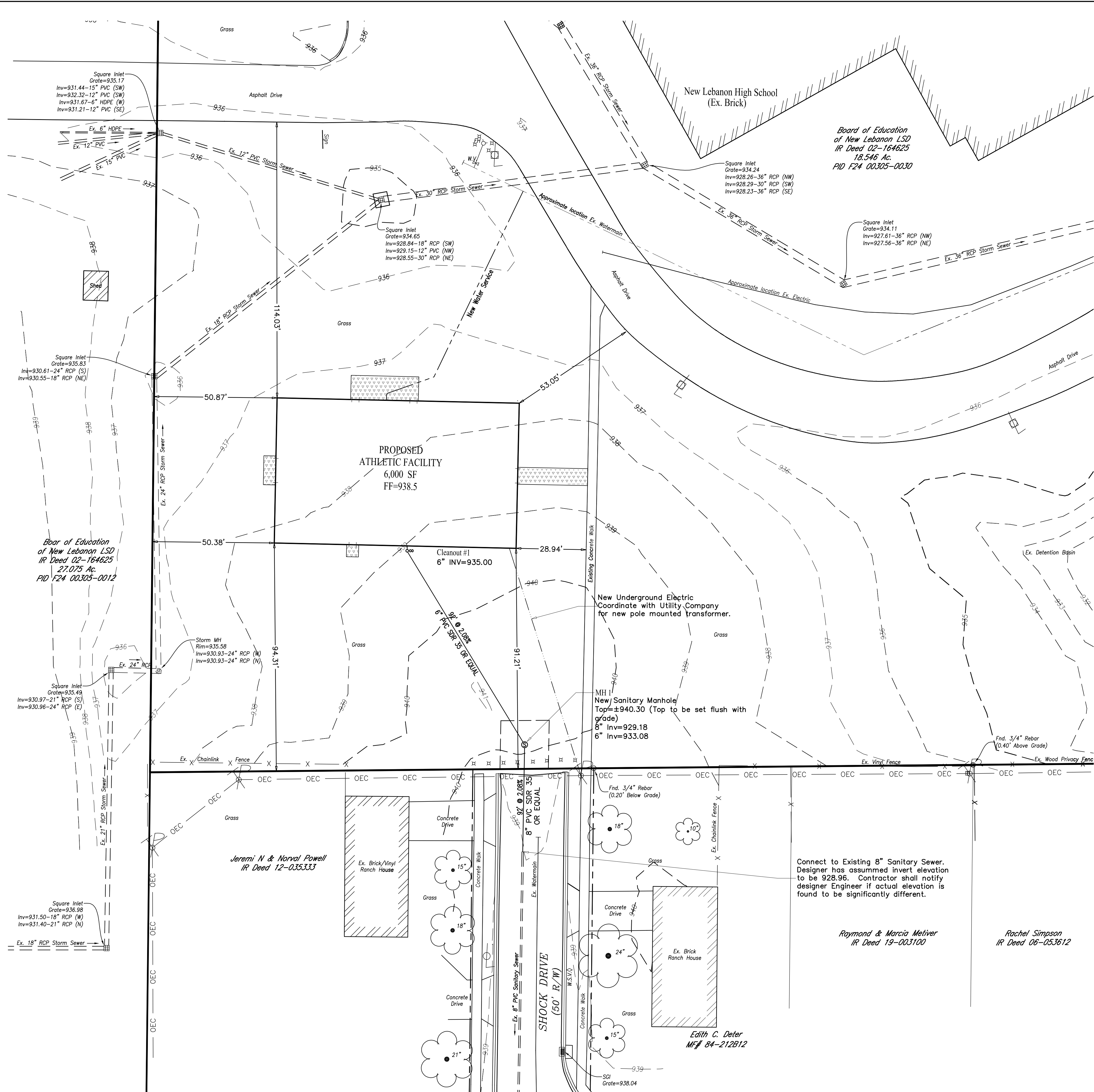




If this sheet is not 24" by 36" it is a reduced print, scale accordingly



**GRAPHIC SCALE**  
20 0 10 20  
1 inch = 20 ft.

Bearings based on the Ohio State Plane Coordinate System, South Zone Grid, NAD '83 (2011-CORS), NAVD '88 (Geoid 12b), per GPS Observations from the Ohio Department of Transportation (ODOT) Virtual Reference System (VRS). All distances shown hereon are ground distances.

**OWNER:**  
Board of Education of New Lebanon LSD  
Containing 45.091 Acres

**ZONING INFORMATION:**  
Current Zoning: R-1 Single Family Residential School is a permitted use.

PLANS PREPARED BY:  
**LAND CONSULTANTS**  
SBE Certified  
associate companies and services  
THE ENGINEERING GROUP  
THE SURVEY COMPANY  
LAND DEVELOPMENT CONSULTING  
COMMUNITY AND ECONOMIC PLANNING

314 FRONT STREET  
LAWRENCEBURG, IN 47025  
(812) 537-2145  
FAX (812) 537-4901  
Toll Free (888) 537-2145

555 CARR STREET  
SUITE 400  
CINCINNATI, OH 45203  
(513) 381-1020

WWW.LANDCONSUL.COM

IN ASSOCIATION WITH:  
**Kara Burkhardt Meineke**  
5335 Far Hills Avenue  
Suite 305  
Dayton, OH 45429  
Phone: (937)-838-6930  
Fax: (815) 417-6755  
KBURK999@SBCGLOBAL.NET

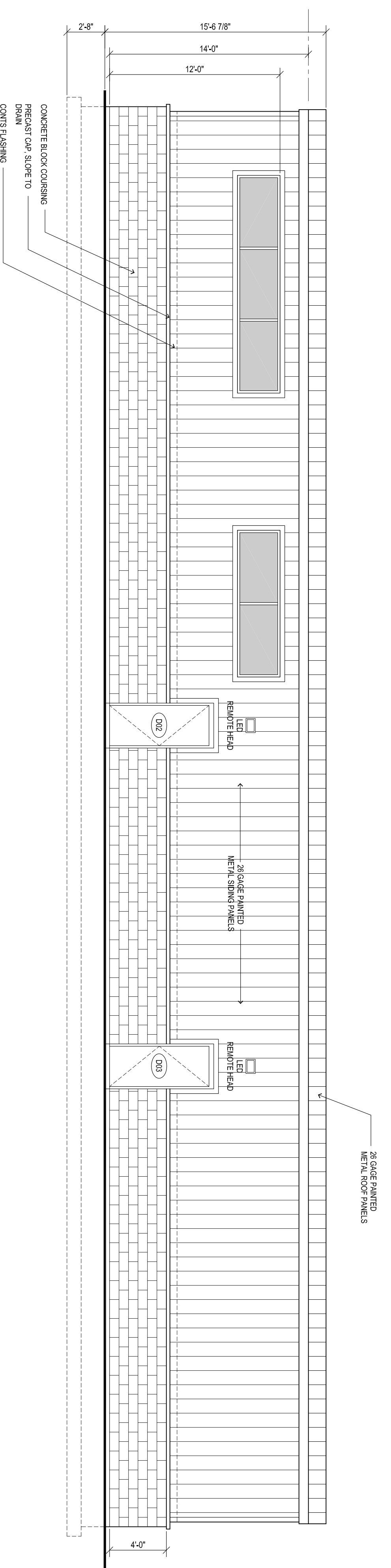
NO.	DESCRIPTION	REVISIONS

PLANS PREPARED FOR:  
**Zimmer Beavercreek Limited**  
4959 Ashwyck Place  
Dayton, OH 45429

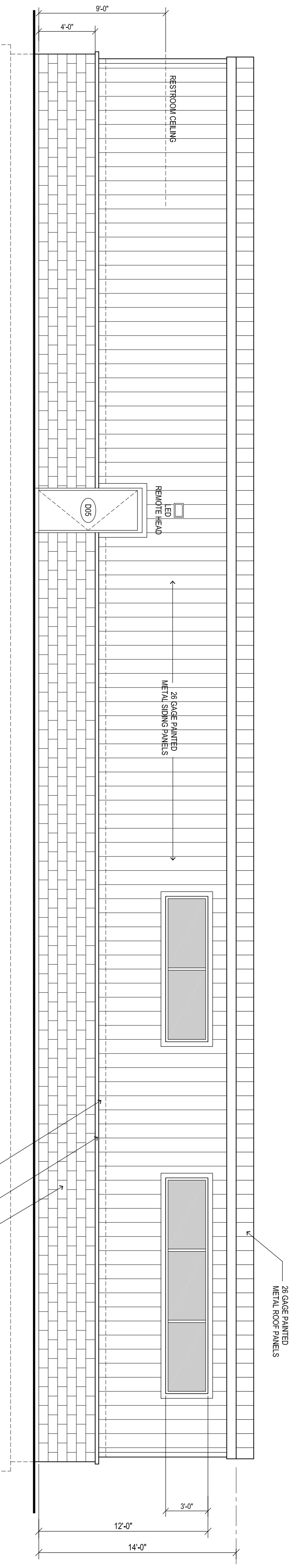
PROJECT NAME:  
**Dixie High School Weight Room**  
320 S Fuls Rd  
Village of New Lebanon  
Montgomery County, Ohio

SHEET TITLE:  
**SITE, UTILITY, GRADING PLAN**

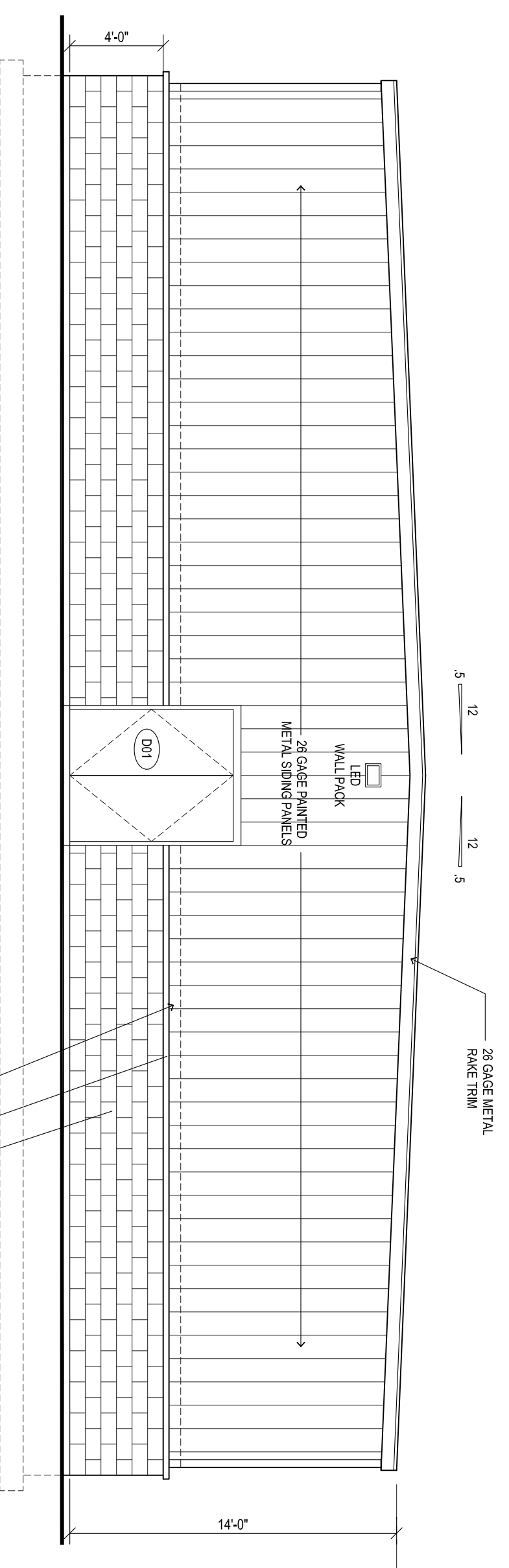
LC PROJ. NO. 22-0156	BASE FILE NAME 168-22 CD.dwg
KBM PROJ. NO. 168-22	TAB NAME SP
DATE 4/12/23	DRAWING NO. C-1.0
SCALE 1"=20'	



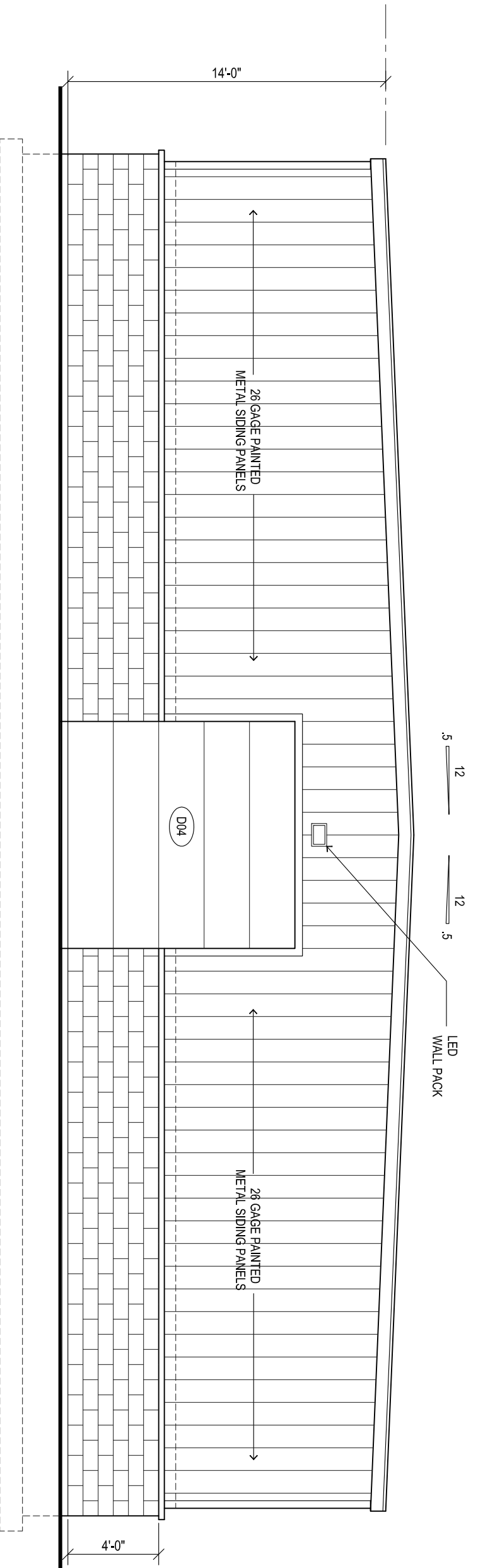
1 Front Elevation  
SCALE 3/16" = 1'-0"



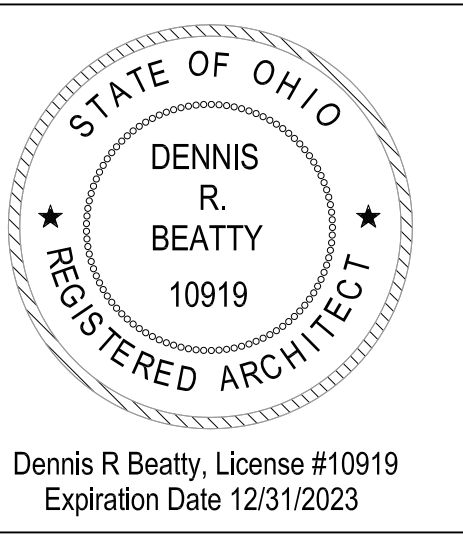
2 Rear Elevation  
SCALE 3/16" = 1'-0"



3 Left Elevation  
SCALE 3/16" = 1'-0"



4 Right Elevation  
SCALE 3/16" = 1'-0"



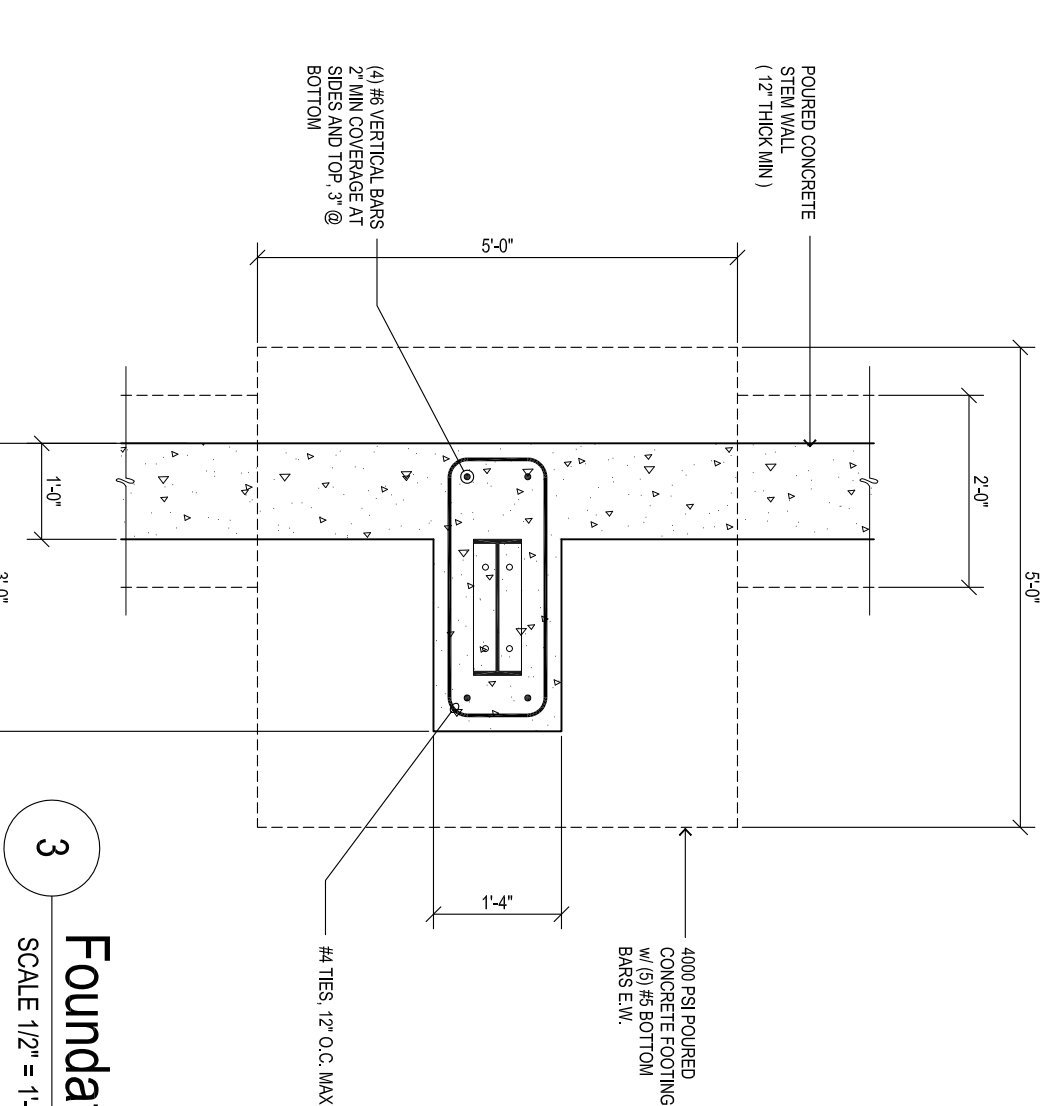
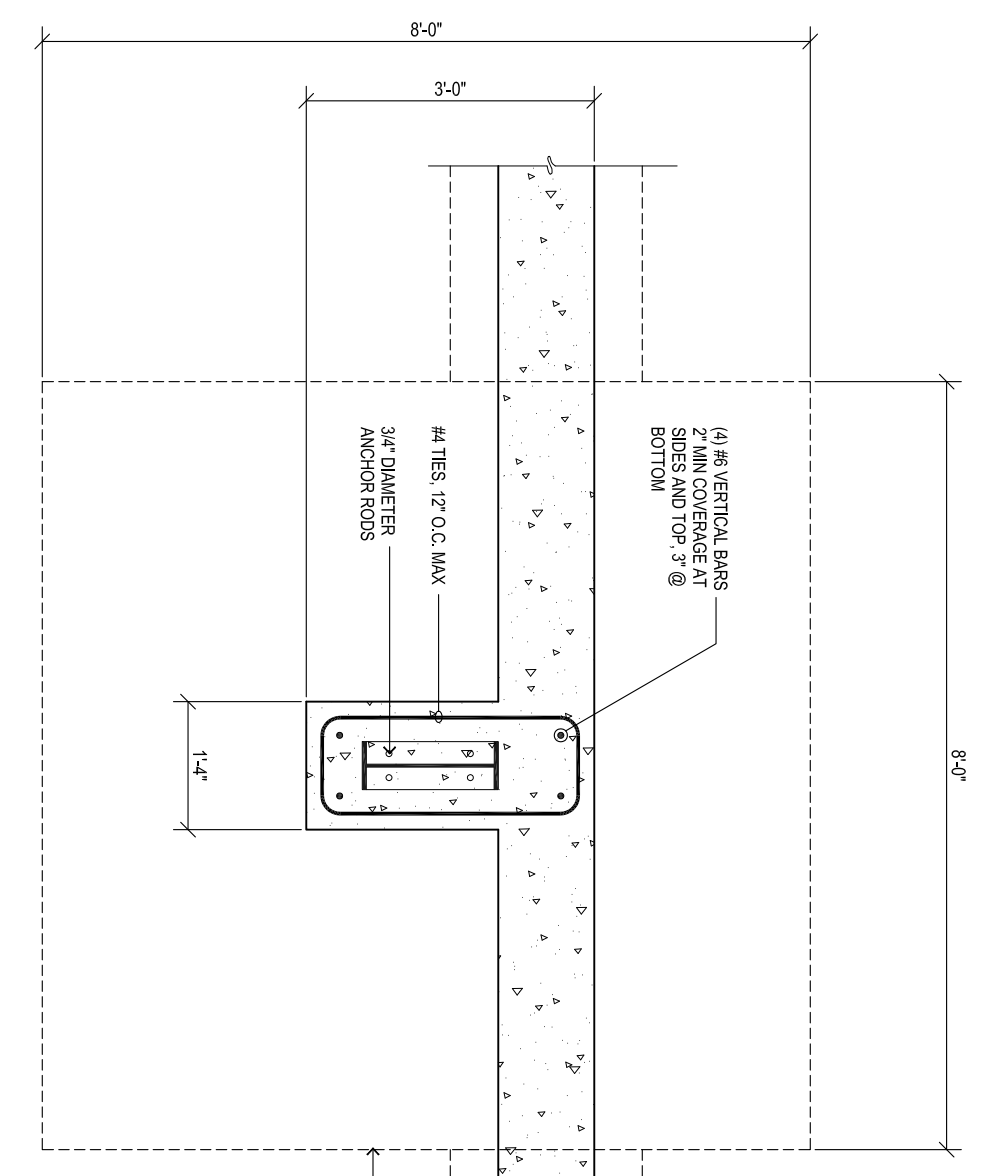
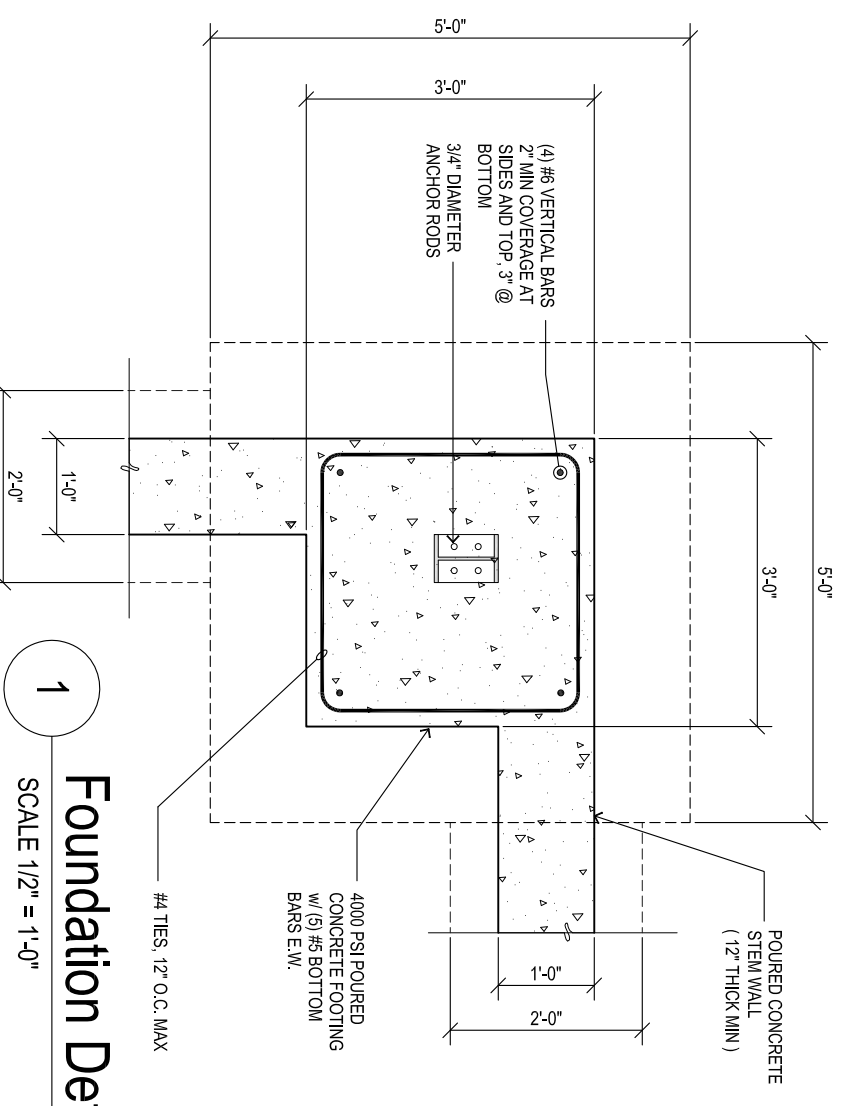
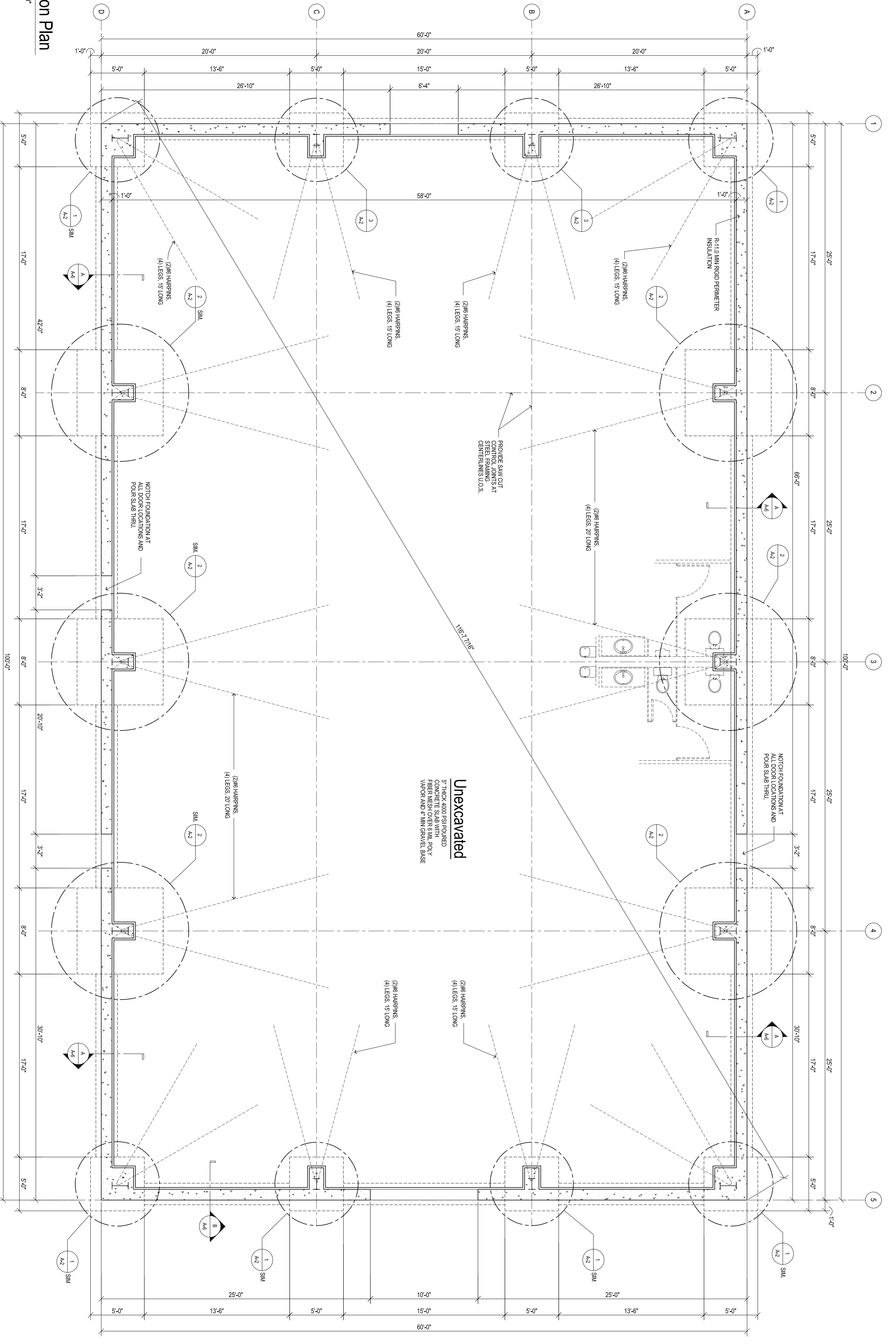
Dennis R. Beatty, A.I.A.  
architect  
1900 FIRST AVENUE  
MIDDLETOWN, OHIO 45044  
Tel : 513/424-8383 Fax : 513/424-8343  
email : architect@cinci.rr.com  
▪ Residential ▪ Commercial ▪ Industrial

Proposed Weight Training Facility  
**New Lebanon High School**  
300 S. Fuls Road  
New Lebanon, Ohio 45345

Exterior Elevations

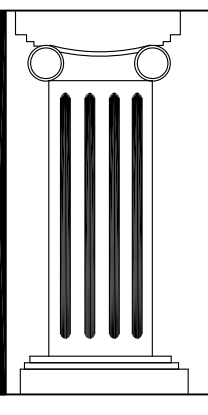
DATE: 9/28/19  
SCALE: AS NOTED  
DRAWN: NJW  
CHK: [blank]  
SHEET NUMBER: A-1

1 Foundation Plan  
SCALE 3/16" = 1'-0"

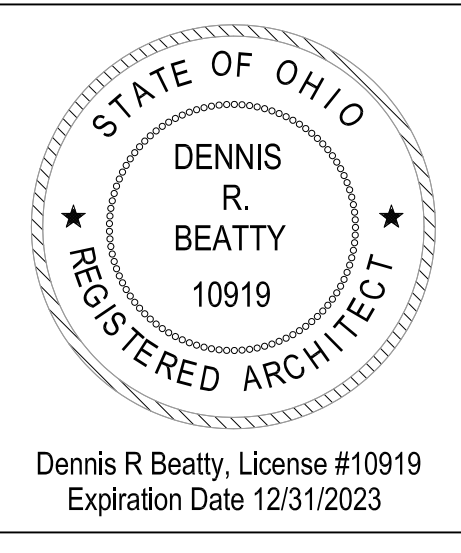


Foundation Plan

Proposed Weight Training Facility  
**New Lebanon High School**  
300 S. Fuls Road  
New Lebanon, Ohio 45345



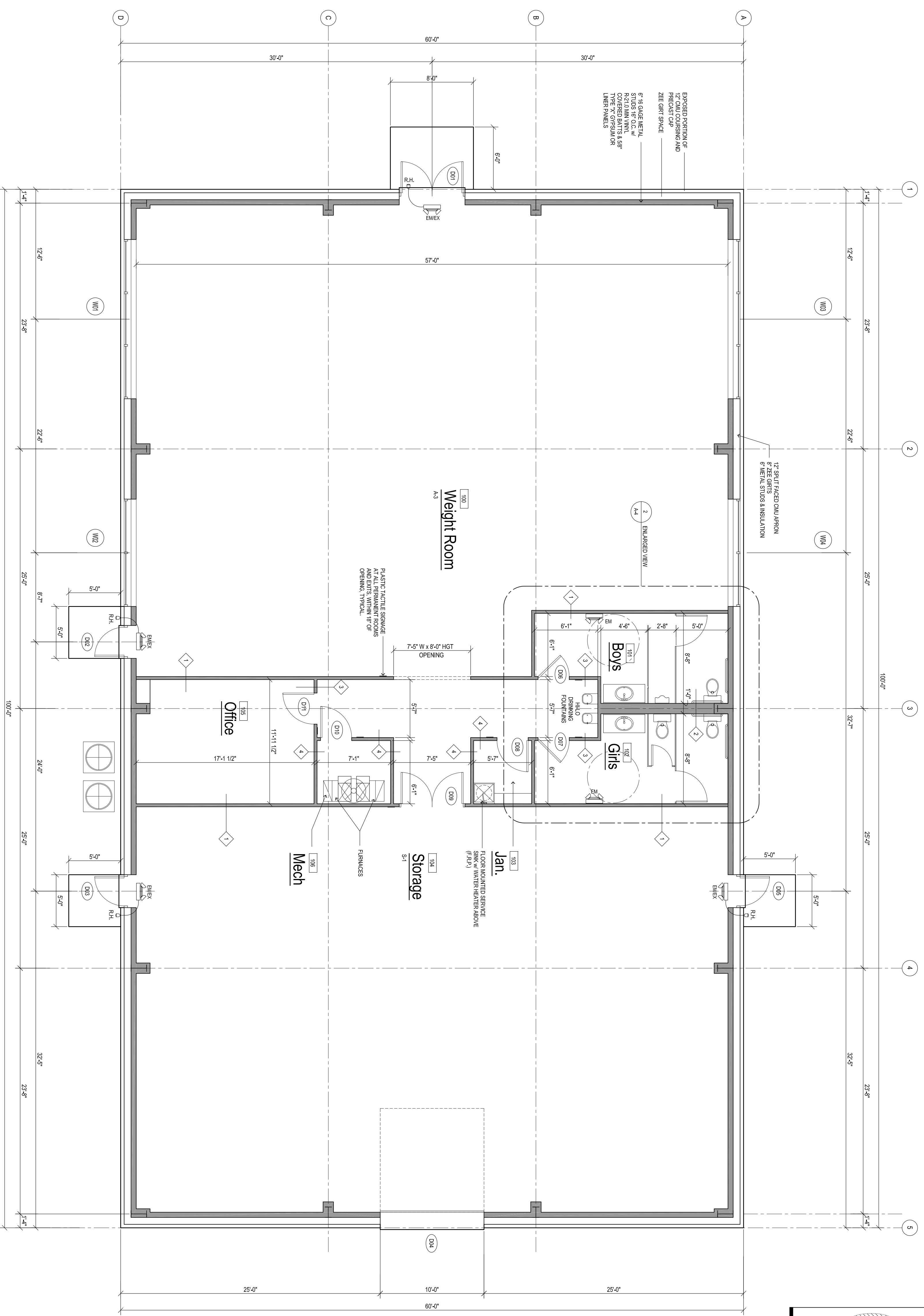
**Dennis R. Beatty, A.I.A.**  
architect  
1900 FIRST AVENUE  
MIDDLETOWN, OHIO 45044  
Tel : 513/424-8383 Fax : 513/424-8343  
email : architect@cinci.rr.com



Revisions:  
REVISION 7/31/2022

- Residential
- Commercial
- Industrial

DATE	02/28/19
BY	AS NOTED
CHK	NW
SCALE	AS NOTED
Sheet Number	A-2



1 Proposed Floor Plan  
SCALE 3/16" = 1'-0"

**DOOR SCHEDULE**

ITEM	TYPE	WIDTH	HEIGHT	SWING	FRAME	MATL	LOCKSET	HARDWARE	COMMENTS
D01	DBL SWING	6'-0"	7'-2"	L/R	HM	STL	KEYED D.B.	LEVER/PUSH BAR	CLOSER FLUSH PANEL, EXIT ALL TIMES
D02	SL SWING	3'-0"	7'-2"	LH	HM	STL	KEYED D.B.	LEVER/PUSH BAR	CLOSER FLUSH PANEL, EXIT ALL TIMES
D03	SL SWING	3'-0"	7'-2"	RH	HM	STL	KEYED D.B.	LEVER/PUSH BAR	CLOSER FLUSH PANEL, EXIT ALL TIMES
D04	OVERHEAD	10'-0"	N/A	N/A	HM	STL	KEYED D.B.	LEVER/PUSH BAR	CLOSER FLUSH PANEL, EXIT ALL TIMES
D05	SL SWING	3'-0"	7'-2"	LH	HM	STL	KEYED D.B.	LEVER/PUSH BAR	CLOSER FLUSH PANEL, EXIT ALL TIMES
D06	SL SWING	3'-0"	7'-2"	RH	HM	STL	KEYED D.B.	LEVER/PUSH BAR	CLOSER FLUSH PANEL, EXIT ALL TIMES
D07	SL SWING	3'-0"	7'-2"	RH	HM	STL	PASSAGE	PUSH PAD PULL HANDLE	CLOSER
D08	SL SWING	3'-0"	7'-2"	RH	HM	STL	PASSAGE	LEVER	CLOSER
D09	SL SWING	3'-0"	7'-2"	LH	HM	STL	PASSAGE	LEVER	CLOSER
D10	SL SWING	3'-0"	7'-2"	LH	HM	STL	PASSAGE	LEVER	CLOSER
D11	SL SWING	3'-0"	7'-2"	RH	HM	STL	PRIVACY	LEVER	EXIT ALL TIMES

**ROOM FINISH SCHEDULE**

ITEM	NAME	CEILING	MATL	WALLS	BASE	FLOORING	COMMENTS
100	WEIGHT ROOM	ACOUSTIC LINER PANEL	4" VINYL COVE U.O.S.	STAINED CONC.			
101	BOYS RESTROOM	ACOUSTIC LINER PANEL	4" VINYL COVE U.O.S.	STAINED CONC.			
102	GIRLS RESTROOM	ACOUSTIC LINER PANEL	4" VINYL COVE U.O.S.	STAINED CONC.			
103	JANITORIAL	EXPOSED	4" VINYL COVE U.O.S.	CONCRETE			
104	STORAGE	ACOUSTIC LINER PANEL	4" VINYL COVE U.O.S.	STAINED CONC.			
105	OFFICE	ACOUSTIC CIG TILE	9'-4"	CONCRETE			
106	MECHANICAL	EXPOSED	9'-4"	CONCRETE			

**WINDOW SCHEDULE**

ITEM	TYPE	NAME	WIDTH	HEIGHT	FRAME	MATL	HEADER	LINTEL	COMMENTS
W01	FIXED	TBD	15'-4"	5'-2"	ALUM	ALUMIGLS	N/A	N/A	
W02	FIXED	TBD	10'-4"	3'-2"	ALUM	ALUMIGLS	N/A	N/A	
W03	FIXED	TBD	15'-4"	3'-2"	ALUM	ALUMIGLS	N/A	N/A	
W04	FIXED	TBD	10'-4"	3'-2"	ALUM	ALUMIGLS	N/A	N/A	

PGVP = PAINTED GYPSUM WALLBOARD (ALL WASHABLE)

ALL EXTERIOR DOORS SHALL HAVE ANSI A117.1 COMPLIANT THRESHOLDS  
ALL DOOR GLAZING SHALL BE CLASS II (PSQ FT)  
LOCKING/LATCHING AND OPERATION OF DOORS SHALL COMPLY  
W/ SECTION 1008.1.9 O.B.C.

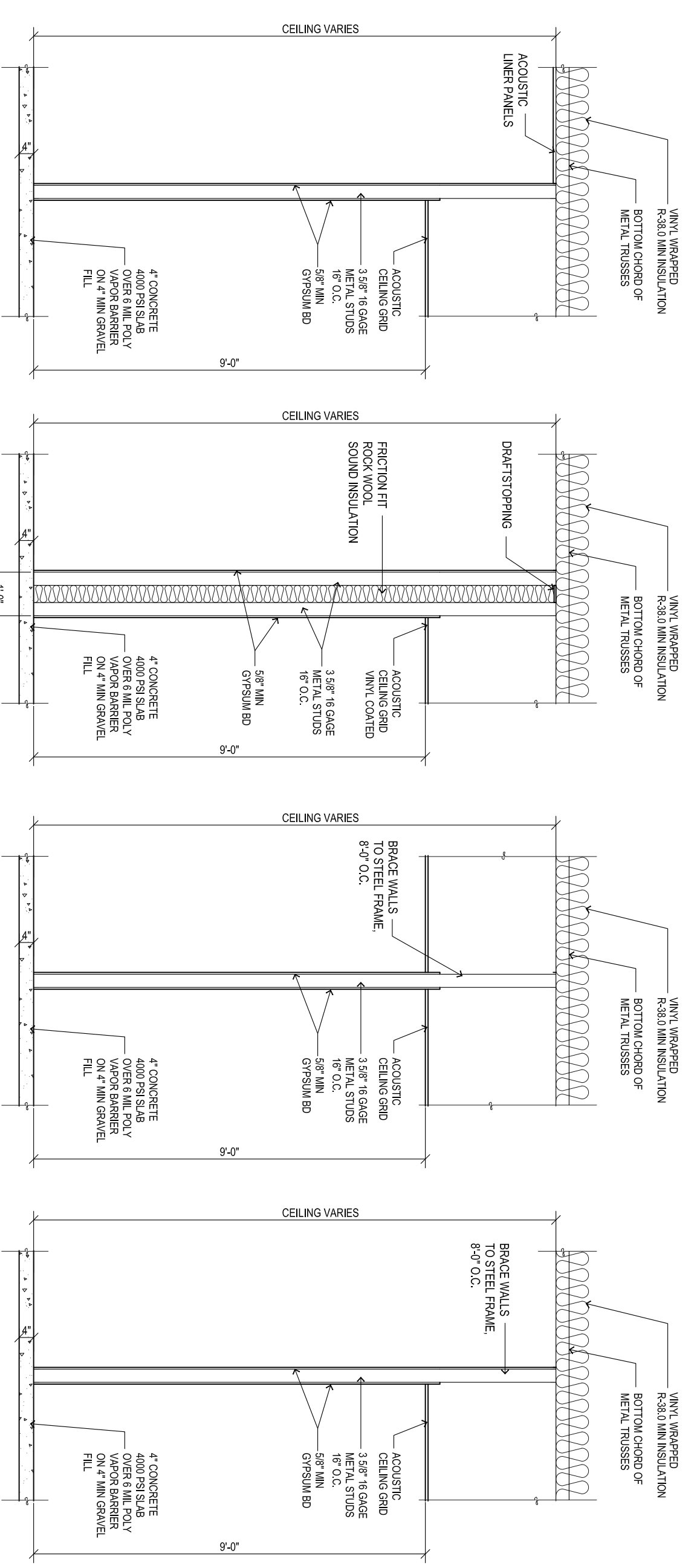
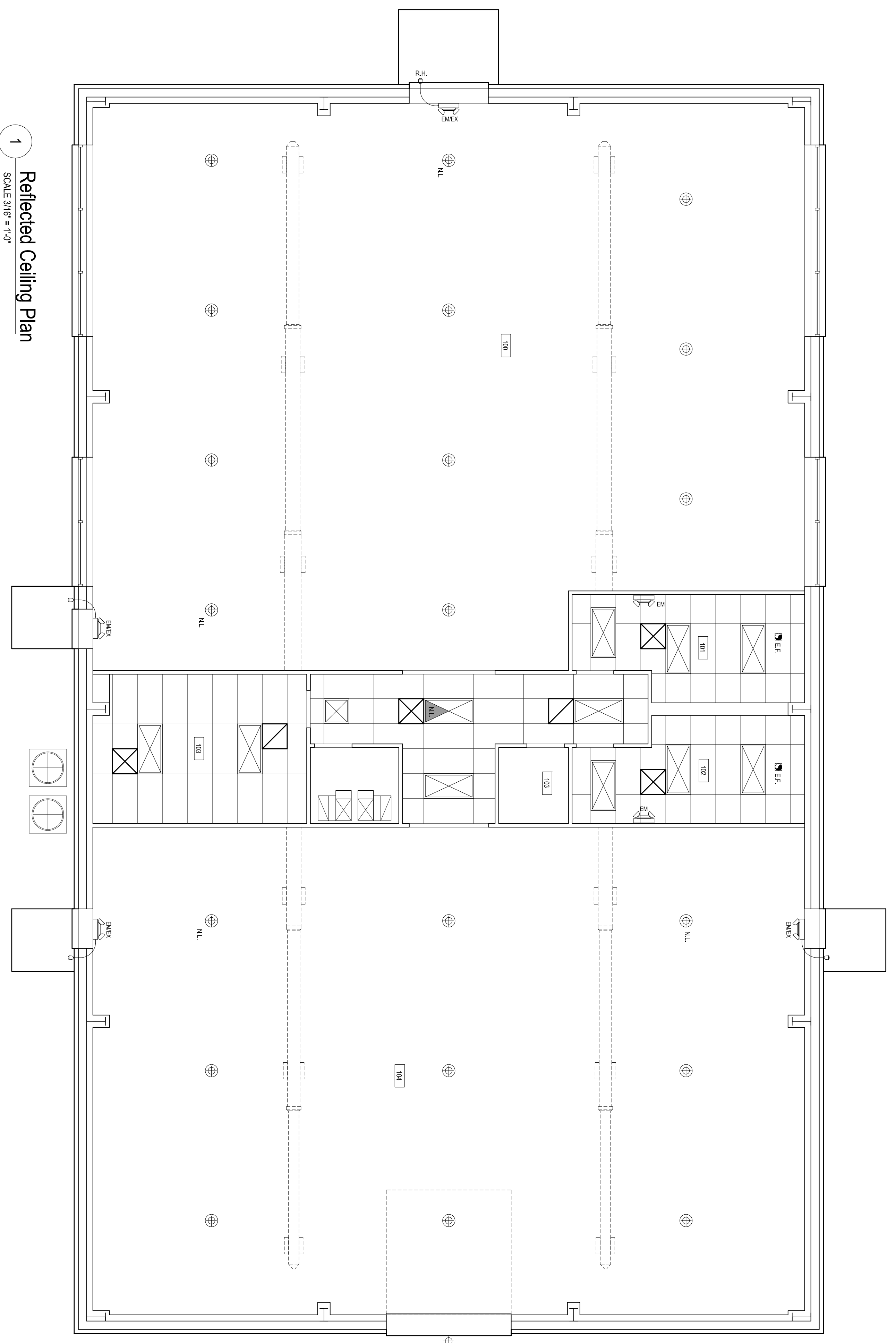
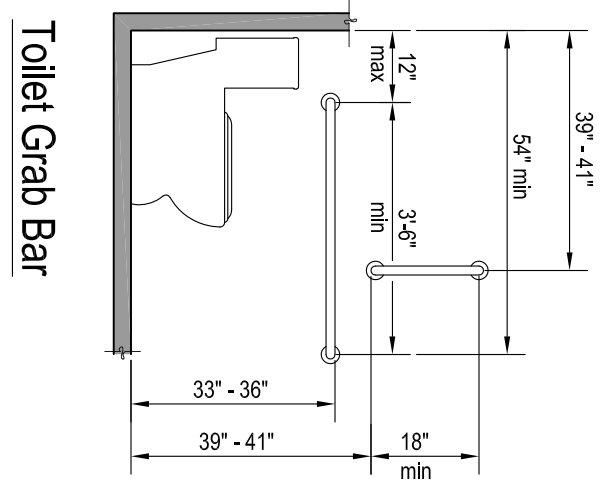
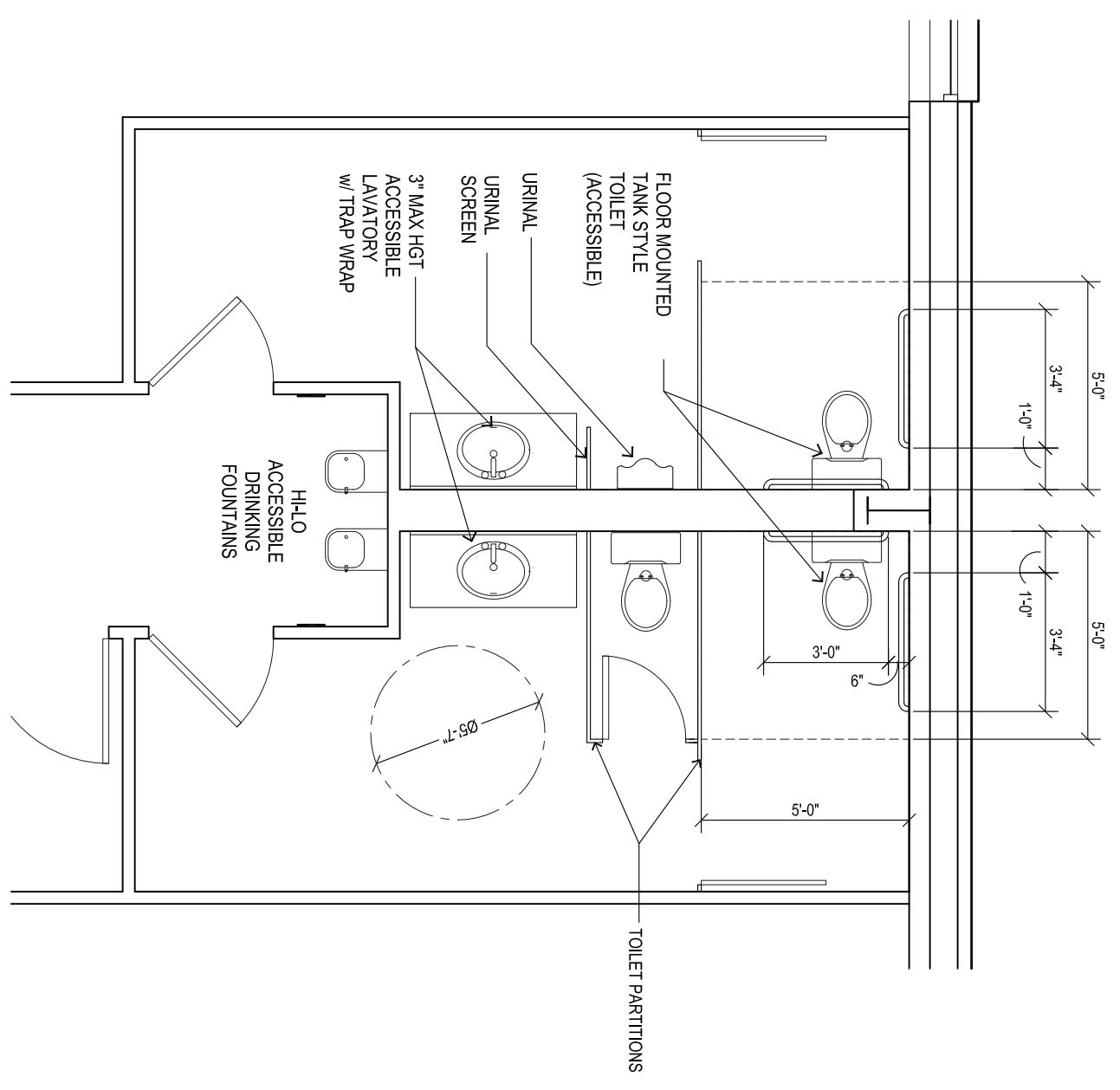


Dennis R. Beatty, A.I.A.  
architect  
1900 FIRST AVENUE  
MIDDLETOWN, OHIO 45044  
Tel : 513/424-8383 Fax : 513/424-8343  
email : architect@cinci.rr.com  
Residential Commercial Industrial

Proposed Weight Training Facility  
**New Lebanon High School**  
300 S. Fuls Road  
New Lebanon, Ohio 45345

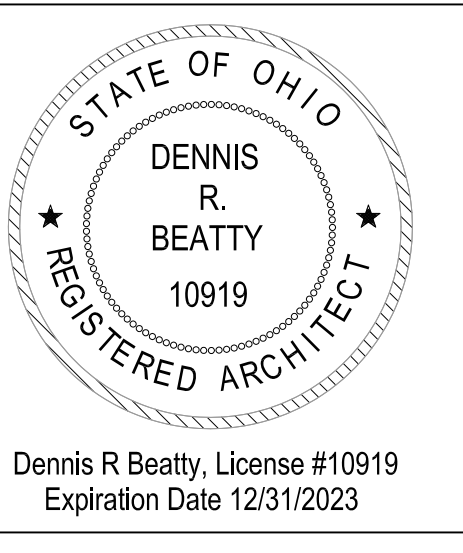
Proposed Floor Plan  
Room Finish Schedule  
Door Schedule  
Window Schedule

DATE: 02/28/19  
DRAWN: AS/Nobis  
CHK: NJW  
Sheet Number: **A-3**



**Legend**

ITEM	DESCRIPTION
	2x2 L.V. IN SUPPLY AIR REGISTER
	2x2 L.V. IN RETURN AIR GRILLE
	EQUAL TO CREEE 2x4 LED TROFFER FIXTURE 44 WATTS
	EQUAL TO CREEE 2x4 LED TROFFER FIXTURE 44 WATTS
	SMALL SUSPENDED LED HIGH BAY LIGHT FIXTURE
	SUSPENDED PENDANT LAMP w/ LED BULB
	LED EMERGENCY/EXIT COMBINATION FIXTURE w/ REMOTE HEAD BATTERY BACKUP
	LED EMERGENCY/EXIT COMBINATION FIXTURE w/ REMOTE HEAD BATTERY BACKUP
	LED EXIT LIGHT FIXTURE w/ REMOTE HEAD BATTERY BACKUP
	2x4 ACOUSTIC CEILING GRID AND PADS



Dennis R. Beatty, A.I.A.  
architect

1900 FIRST AVENUE  
MIDDLETOWN, OHIO 45044  
Tel : 513/424-8383 Fax : 513/424-8343  
email : architect@cinci.rr.com

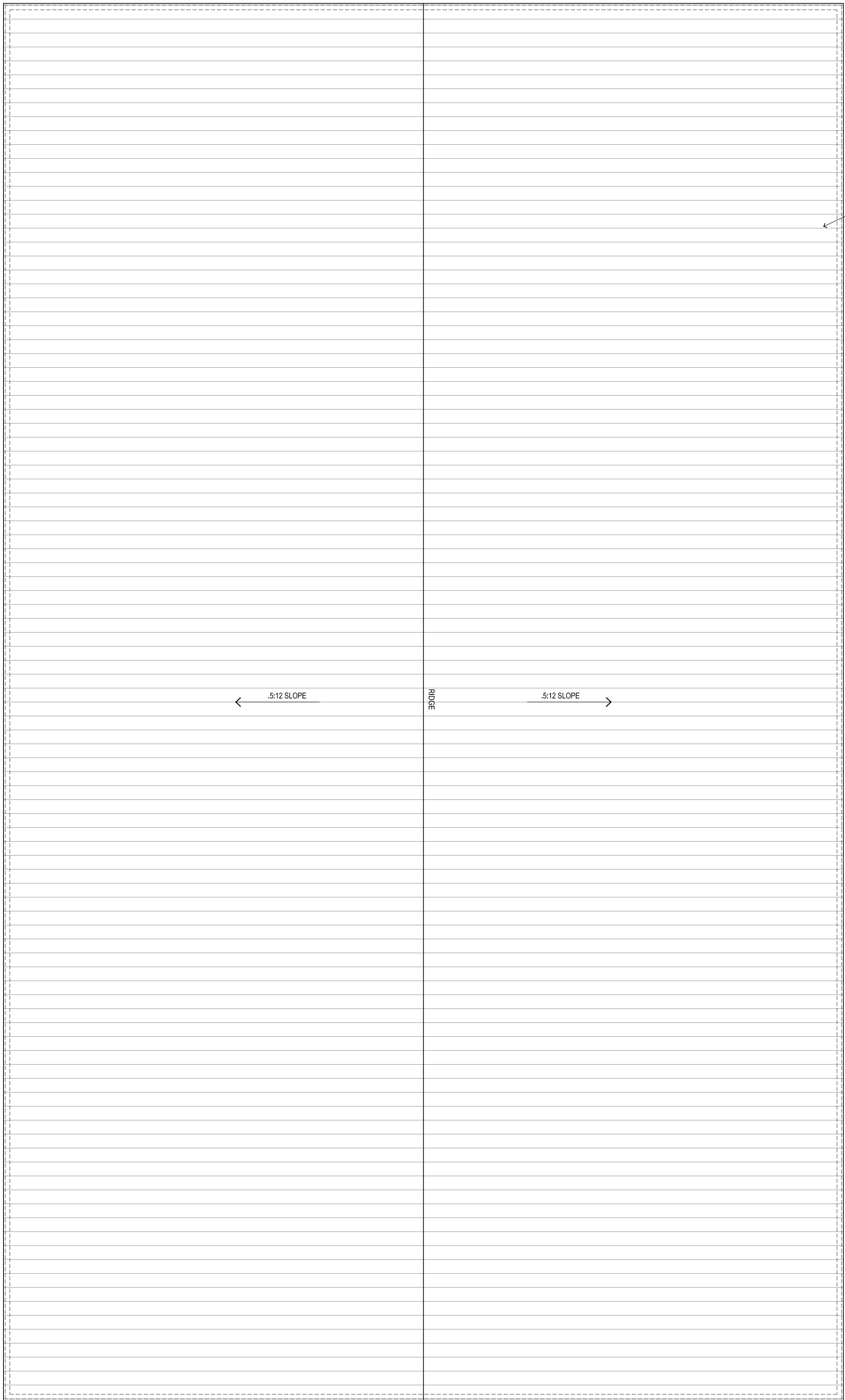
Residential Commercial Industrial

Proposed Weight Training Facility  
**New Lebanon High School**  
300 S. Fuls Road  
New Lebanon, Ohio 45345

Reflected Ceiling Plan  
Partition Details  
Enlarged View

DATE: 9/28/19  
SCALE: AS NOTED  
SHEET: N1W

Sheet Number  
**A4**



1 Roof Plan  
SCALE 3/16" = 1'-0"

26 GAUGE PAINTED  
METAL ROOF PANELS

.5:12 SLOPE

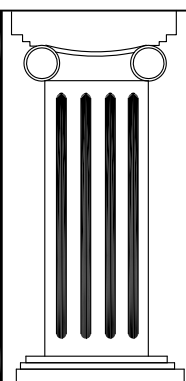
RIDGE

.5:12 SLOPE

Roof Plan

Proposed Weight Training Facility  
**New Lebanon High School**

300 S. Fuls Road  
New Lebanon, Ohio 45345



**Dennis R. Beatty, A.I.A.**  
architect

1900 FIRST AVENUE  
MIDDLETOWN, OHIO 45044  
Tel : 513/424-8383 Fax : 513/424-8343  
email : architect@cinci.rr.com

- Residential
- Commercial
- Industrial

Revisions:  
REVISION 7/31/2023

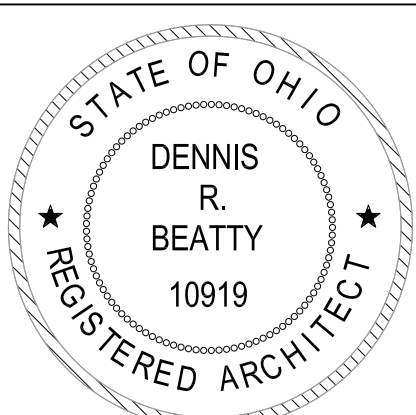
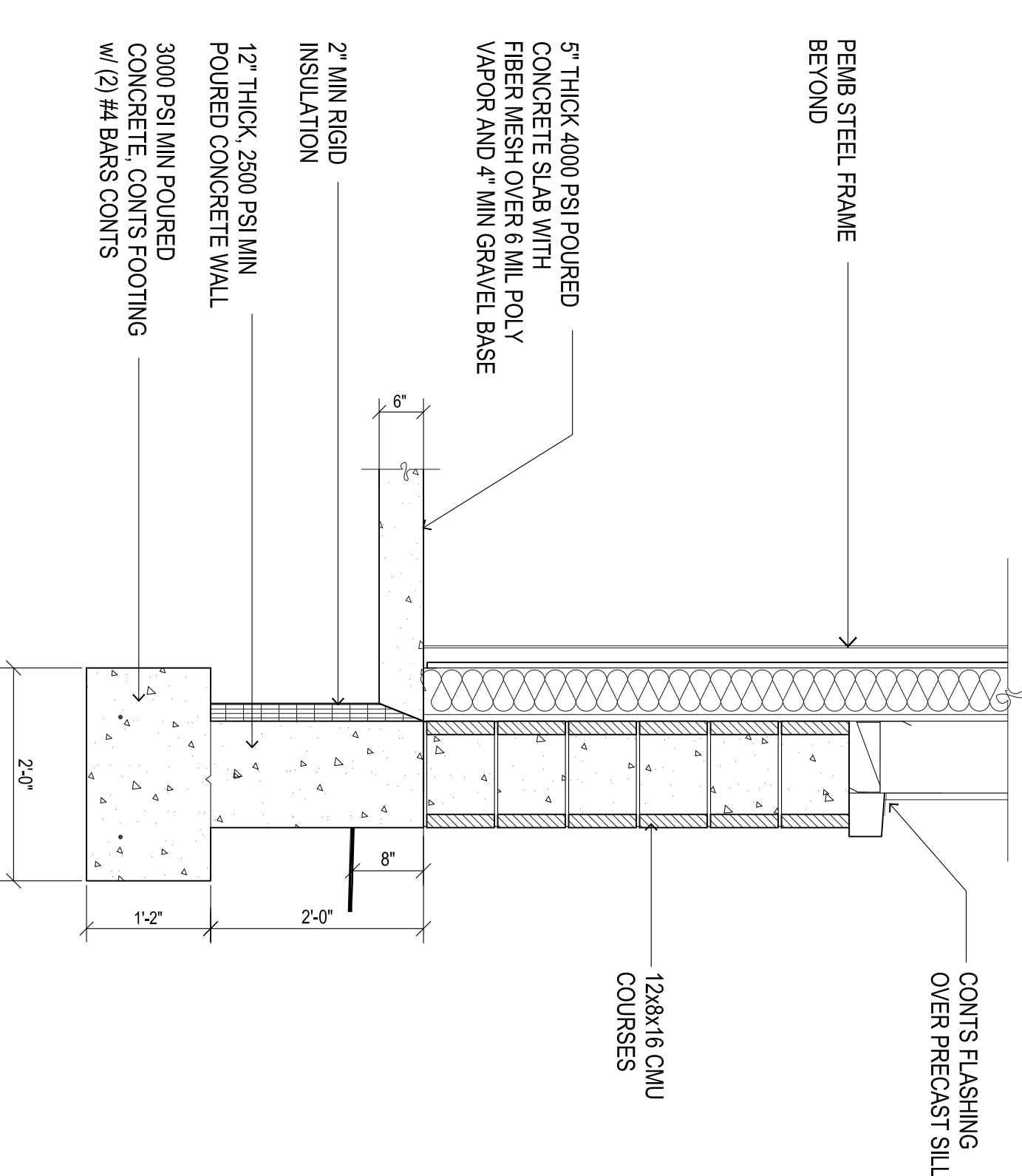
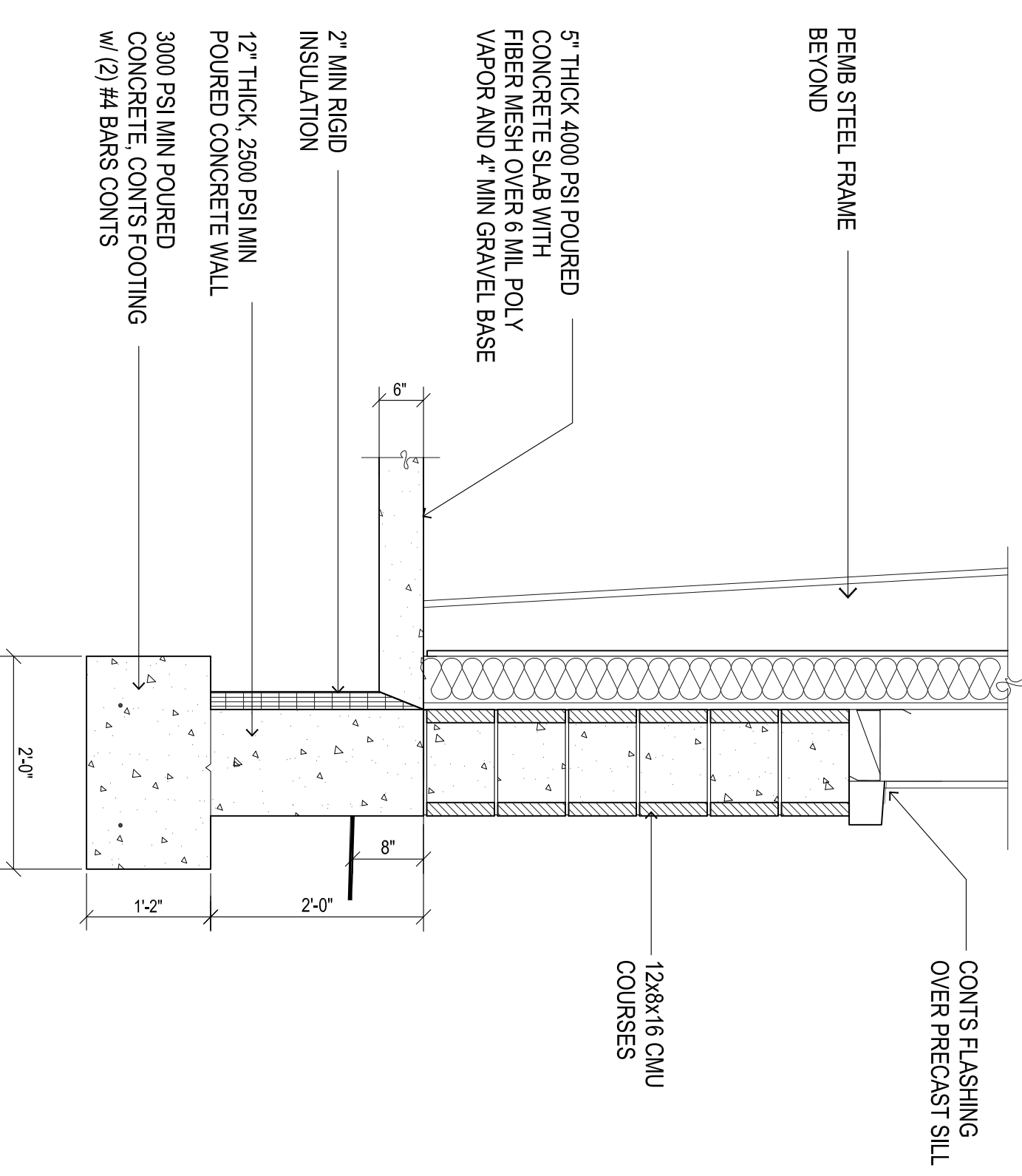
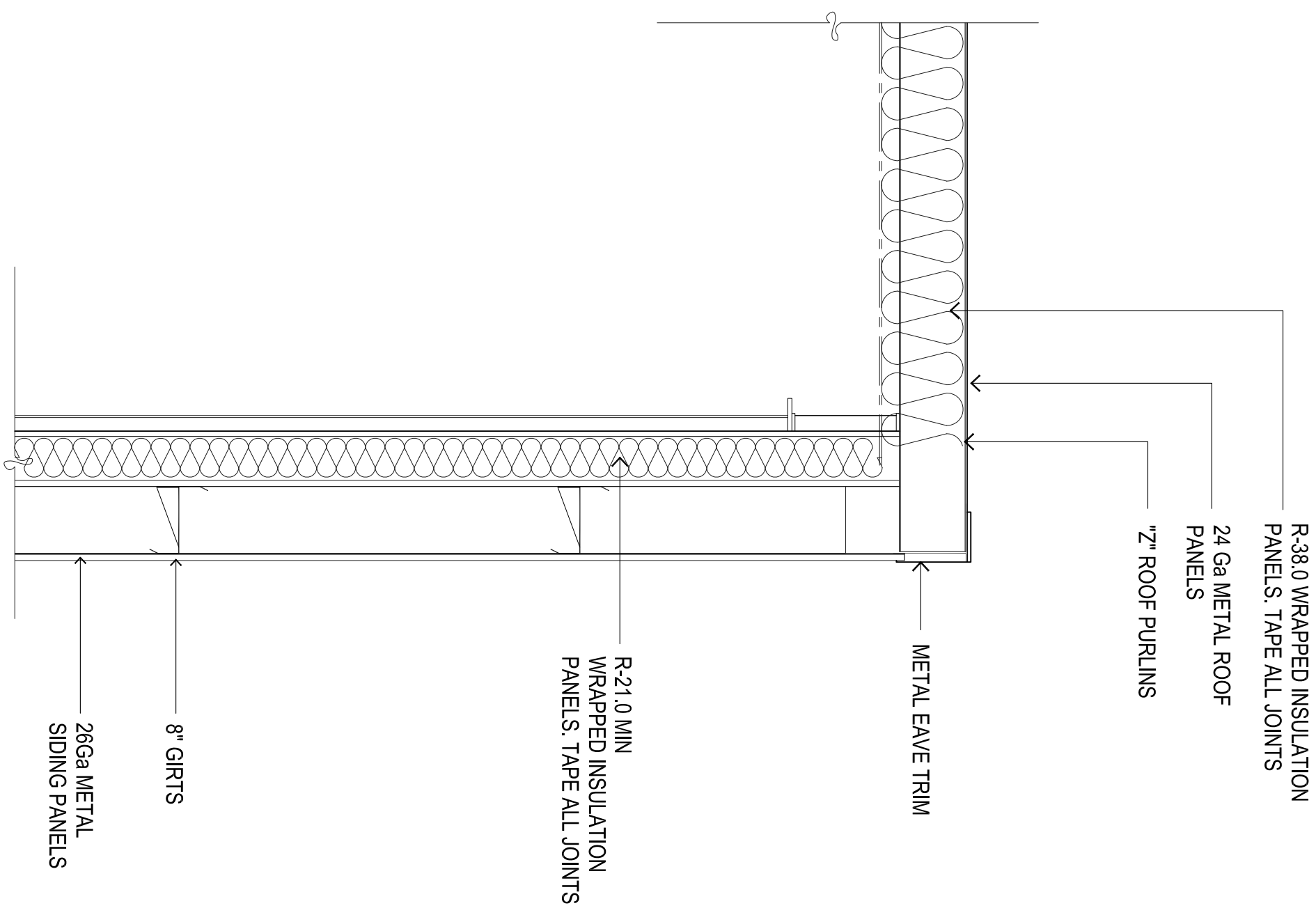
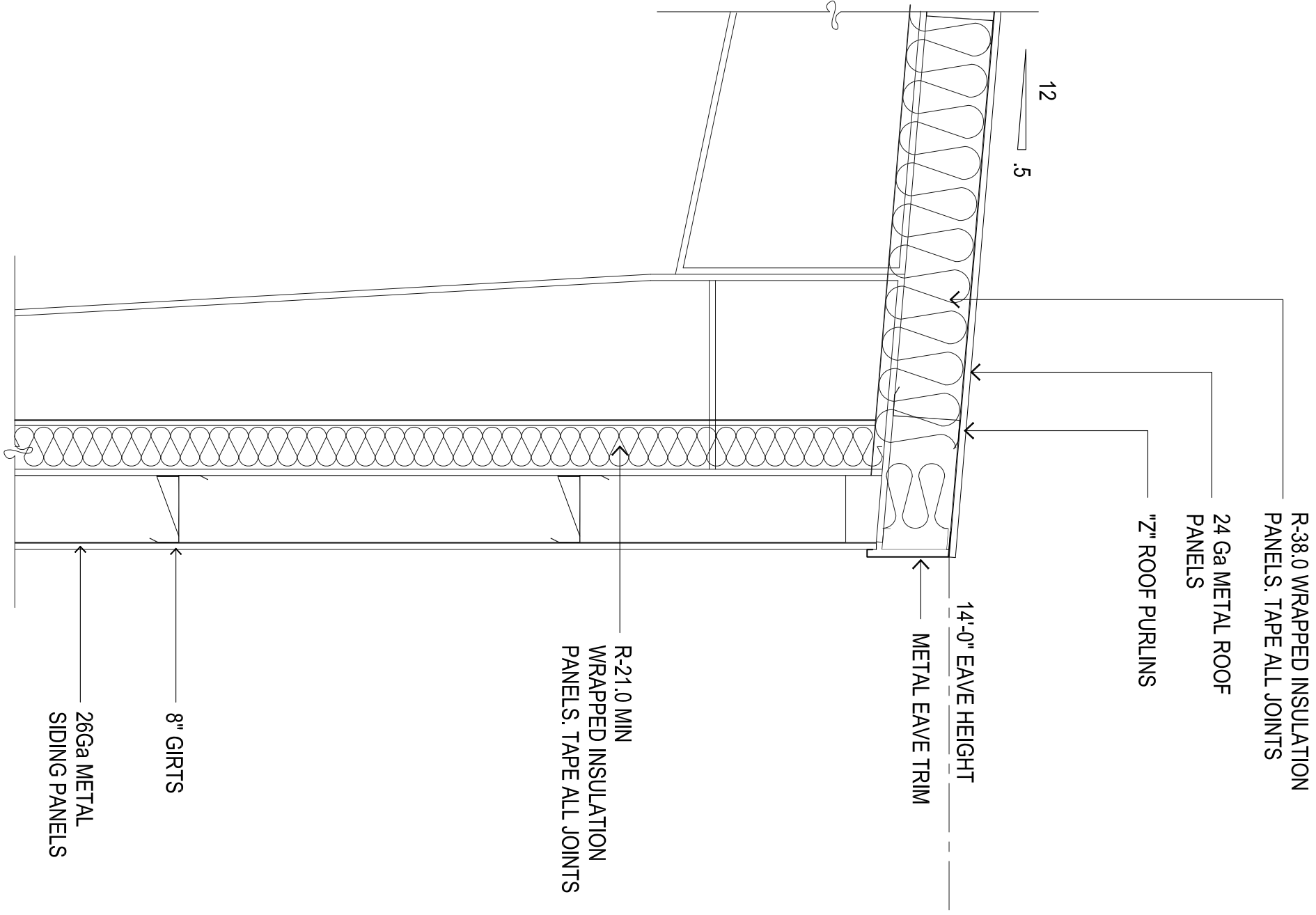


Dennis R Beatty, License #10919  
Expiration Date 12/31/2023

A-5

DATE: 9/28/19  
SCALE: AS NOTED  
ORIENT: N/W

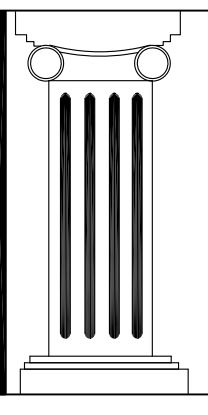
Sheet Number



Dennis R Beatty, License #10919  
Expiration Date 12/31/2023

**Dennis R. Beatty, A.I.A.**  
architect  
1900 FIRST AVENUE  
MIDDLETOWN, OHIO 45044  
Tel : 513/424-8383 Fax : 513/424-8343  
email : architect@cinci.rr.com

- Residential
- Commercial
- Industrial



Proposed Weight Training Facility  
**New Lebanon High School**  
300 S. Fuls Road  
New Lebanon, Ohio 45345

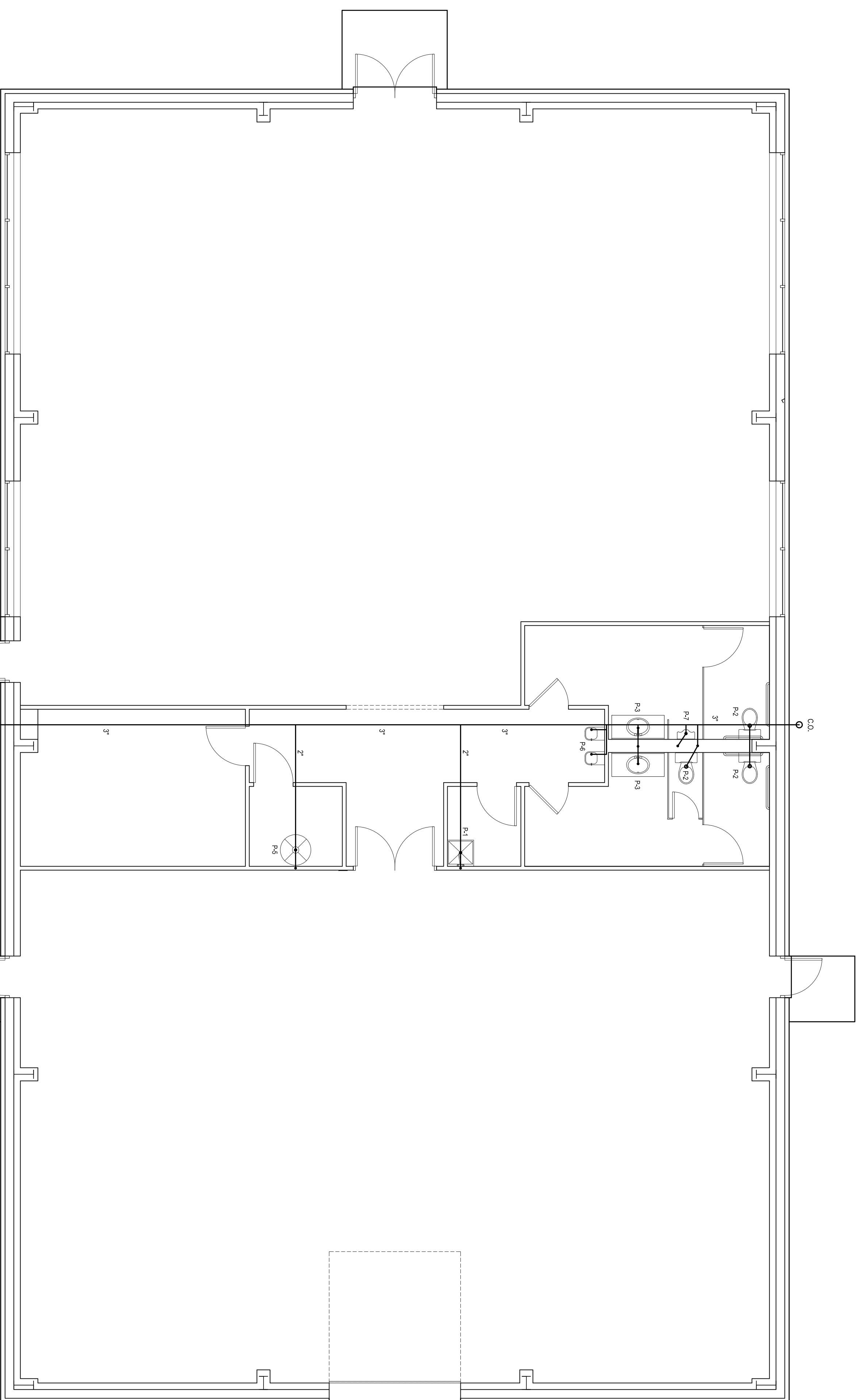
Sections

DATE	9/28/19
BY	AS NOTES
CHECKED	NW
SCALE	3/4" = 1'-0"
SECTION NUMBER	A-6

**A** Wall Section  
SCALE 3/4" = 1'-0"

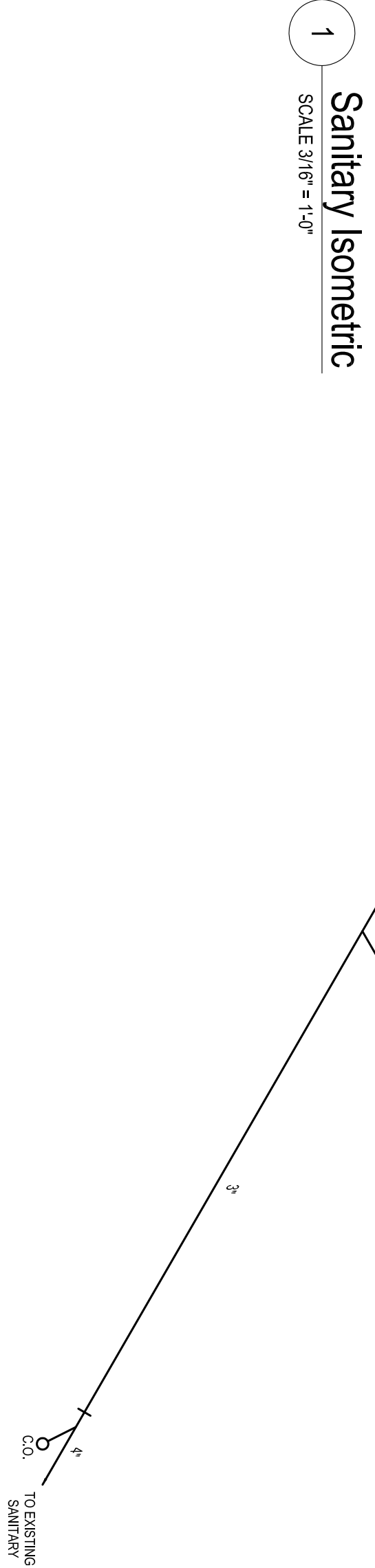
**B** Wall Section  
SCALE 3/4" = 1'-0"





1  
SCALE 3/16" = 1'-0"

### Plumbing Layout



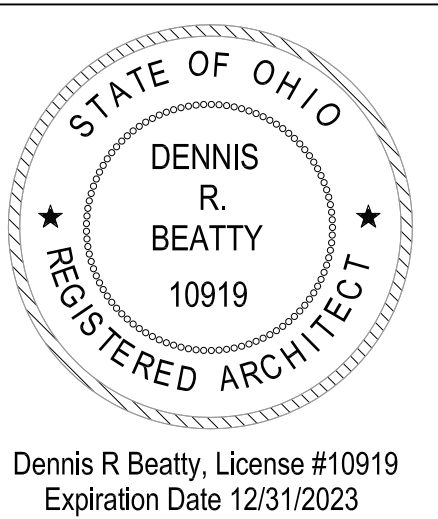
1  
SCALE 3/16" = 1'-0"

### Sanitary Isometric

**Plumbing Notes**

- Provide tempered water at lavatories, limiting temperature of handwashing facilities to between 85°F & 110°F by use of an ASSE 1070 approved temperature limiting device.
- Install 0.5 GPM aerators on all public lavatory faucets per Section 0914.0 PC.

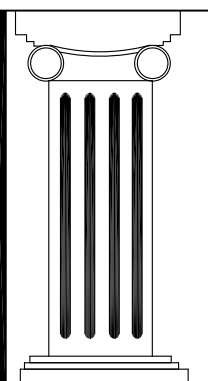
Item	Quantity	Description
P-1	1	Emergency Sanitary Lavatory Sink
P-2	1	Hand-washing sink with ASSE 1070 approved temperature limiting device
P-3	1	Hand-washing sink with ASSE 1070 approved temperature limiting device
P-4	1	Hand-washing sink with ASSE 1070 approved temperature limiting device
P-5	1	Hand-washing sink with ASSE 1070 approved temperature limiting device
P-6	1	Hand-washing sink with ASSE 1070 approved temperature limiting device
P-7	1	Hand-washing sink with ASSE 1070 approved temperature limiting device



**Dennis R. Beatty, A.I.A.**  
architect

1900 FIRST AVENUE  
MIDDLETOWN, OHIO 45044  
Tel : 513/424-8383 Fax : 513/424-8343  
email : architect@cinci.rr.com

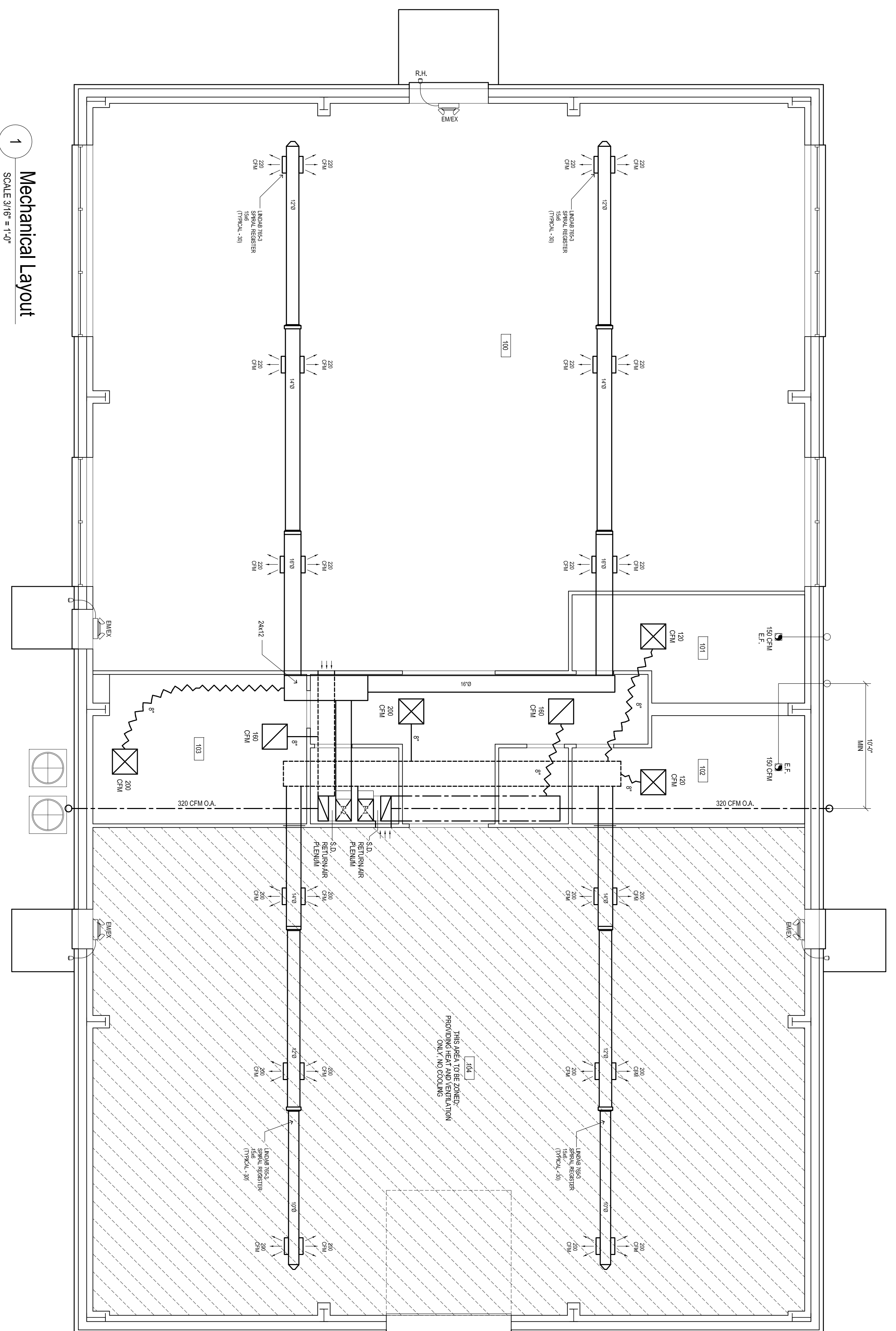
▪ Residential ▪ Commercial ▪ Industrial



Proposed Weight Training Facility  
**New Lebanon High School**  
300 S. Fuls Road  
New Lebanon, Ohio 45345

Plumbing Layout  
Sanitary Isometric

Date: 02/28/19  
Scale: As Noted  
Sheet: NW  
Sheet Number: P-1



1 Mechanical Layout  
SCALE 3/16" = 1'-0"

Room No.	Room Name	Area (sq ft)	CFM Per Person	CFM Per square foot	Occupants per 1,000 sq ft	Default Occ. Load Per Table 403.3 OMC	People Outdoor Airflow Rate	Distribution Eff.	Area Outdoor Airflow Rate	Air Flow	Exhaust CFM per sq ft	Exhaust Air Flow CFM
100	Weight Room	2468	20	0.06	10	24.68	493.60	0.8	148.08	802.10	50 cfm/fixture	150
101	Boys Restroom	206	0	0	0	0.00	0.00	0.8	0.00	0.00	50 cfm/fixture	150
102	Girls Restroom	206	0	0	0	0.00	0.00	0.8	0.00	0.00	50 cfm/fixture	150
104	Storage	2211	20	0.06	10	22.11	442.20	0.8	132.66	718.58		
105	Office	147	5	0.06	5	0.74	3.68	0.8	8.82	15.62		
106	Mechanical	116	0	0.12	0	0.00	0.00	0.8	13.92	17.40		
									Outside Air	1553.69		640 available

**Legend**

☒	DESCRIPTION
☒	222 LAY IN SUPPLY AIR REGISTER
☒	222 LAY IN RETURN AIR GRILLE

Mechanical Layout

Proposed Weight Training Facility  
**New Lebanon High School**  
 300 S. Fuls Road  
 New Lebanon, Ohio 45345

**Dennis R. Beatty, A.I.A.**  
 architect  
 1900 FIRST AVENUE  
 MIDDLETOWN, OHIO 45044  
 Tel : 513/424-8383 Fax : 513/424-8343  
 email : architect@cinci.rr.com

Residential Commercial Industrial



Revisions:  
 REVISION 7/31/2022

Date: 9/28/19  
 Scale: As Noted  
 Drawn: NJW  
 Title: M-1

