

ADDENDUM NO. 1

EAST PATROL OPERATIONS DIVISION NORTH RENOVATIONS RE-BID
(10% MBE PARTICIPATION GOAL)

January 29, 2026

TO ALL BIDDERS:

This addendum, including all articles and corrections listed below, shall be taken into account in preparing the “Bid” and shall become part of the Contract.

SECTION A. SITE VISIT SIGN IN SHEET

Attached is the sign in sheet from the voluntary January 27, 2026 site visit.

SECTION B. REVISED DRAWINGS

Attached are revised electrical drawing sheets to be included in this Addendum No. 1:

Sheet E0.2: Revised Lighting Fixture Schedule

Sheet E0.4: Revised Panel Schedules circuitry

Sheet E2.0: Revised EM lighting

Sheet E2.1: Revised exterior canopy lighting

Sheet E3.1: Revised receptacle circuitry

Sheet E4.1: Added fire alarm devices

SECTION C. QUESTIONS AND ANSWERS

QUESTION #1: Who can I contact to help find union contractors specifically for specialized trades. For example, demo or cleaning.

ANSWER: The City’s Human Relations Council can assist connecting prime contractors with subcontractors. You may reach out to them at 937-333-1403 or bta@daytonohio.gov. For a link to certified Minority Business Enterprise (MBE) companies, please utilize the “PEP Certification List” at this link. <https://citybots.com/Home/Links>

QUESTION #2: If a non-union contractor is trying to work on a project, what rules do they have to follow or what are they bound too? I know it states under section 4.2 that they don’t have to pay union fees or join the union.

ANSWER: All contractors, whether union or non-union, must be signatory to this project labor agreement (“PLA”). After notice of intent to award, the proposed general contractor must begin executing this PLA. During this time, there is an opportunity to further negotiate certain terms and scope with each union. After which, all contractors signatory to this PLA must follow the terms as executed.

ADDENDUM NO. 1

EAST PATROL OPERATIONS DIVISION NORTH RENOVATIONS RE-BID
(10% MBE PARTICIPATION GOAL)

January 29, 2026

QUESTION #3: If the GC has salaried management individuals on a project, do they have to pay prevailing wages?

ANSWER: No. Project management is not subject to prevailing wage rates.

QUESTION #4: Page A0.2, please confirm SSC-1 is the same as SSM-1 on the material legend chart.

ANSWER: Yes this is the same.

QUESTION #5: Page A1.2 note 11, are these supplied and installed by contractor?

ANSWER: Supplied by Owner.

QUESTION #6: Do all interior rooms get interior room ID signage? Or just per the door remark note 1&2 on page A0.3?

ANSWER: Notes 1&2 on Sheet A0.3 describes this work.

QUESTION #7: Where is wall type D1 on page A1.3?

ANSWER: Replace D1 with C1.

QUESTION #8: Note 19 on page A1.1, what is the thickness of this slab? Are we to carry in our proposal the cost to scan the floor prior to saw cutting to confirm there is no existing utilities in this area? This is the same for A1.2 note 4, for the recessed shower pans.

ANSWER: Field verify, there are no existing drawings to provide further detail.

QUESTION #9: Note 7 on A1.1, is this area to get asphalt pavement once demo-ed?

ANSWER: Patch and repair. Refer to General Notes on Sheet No. G0.2

QUESTION #10: Is all third party testing to be paid by the owner?

ANSWER: Yes, however Contractor shall be responsible for scheduling all necessary third-party inspections.

QUESTION #11: Please confirm if level 4 gyp wall finish is required on all exposed walls.

ANSWER: Refer to Project Specifications, Section 09 2116-6, Par. 3.06. Level 4 at a minimum.

QUESTION #12: In the weight room, are we to move the equipment to install the flooring/painting?

ADDENDUM NO. 1

EAST PATROL OPERATIONS DIVISION NORTH RENOVATIONS RE-BID
(10% MBE PARTICIPATION GOAL)

January 29, 2026

ANSWER: Yes, Contractor shall assume all necessary labor, equipment, and materials to relocate gym and fitness equipment to perform the work in this space. Equipment should remain on site and in this room.

QUESTION #13: Can we include an allowance for floor patch/repair as stated on A1.1 general note D?

ANSWER: Allowance is acceptable. An allowance in the base bid of \$10,000 is provided for this work.

QUESTION #14: Is there a spec for the 911 call box?

ANSWER: Please utilize Allen Tel, GB259V00, Color: Black.

QUESTION #15: Page A1.2 note 12, is there a detail for this?

ANSWER: Free standing, steel pedestals with bottom bell flanges, maple hardwood top.

QUESTION #16: Room 123 on A1.2, are these lockers supposed to have note 23 on them?

ANSWER: Yes, same as Room 113. Please delete 1 locker from total count. Owner has 1 locker in storage from another location to provide.

QUESTION #17: Please confirm if the owner is paying for the building permit.

ANSWER: No, the cost of the building permit shall be paid for and picked up by the Contractor. Line Item 2, "Building Permit & Application Fee" in the fixed amount of \$42,888.23, is for the building permit and application fee that is ready to pick up from One Stop 371 West Second Street, 2nd Floor Building Services. Permit #BLD2025C-00340.

Switchboard: MDP

Location: BASEMENT
Supply From: MDP
Mounting: Surface
Enclosure: Type 1

Volts: 120/208 Wye
Phases: 3
Wires: 4

A.I.C. Rating: 42K AIC
Mains Type: M.B.
Mains Rating: 800 A
MCB Rating: 800 A

Notes:

CKT	Circuit Description	# of Poles	Frame Size	Trip Rating	Load	Wire Size	Feed	Cond. Size
1	R1	3	100 A	100 A	5200 VA	3-#2, 1-#2, 1-#8	CU	1.25"
2	R2	3	200 A	200 A	47055 VA	3-#4/0, 1-#4/0, 1-#6	CU	2"
3	R3	3	200 A	200 A	24880 VA	3-#4/0, 1-#4/0, 1-#6	CU	2"
4	R4	3	200 A	200 A	49032 VA	3-#4/0, 1-#4/0, 1-#6	CU	2"
5								1.25"
6	R5	3	200 A	200 A	25929 VA	3-#4/0, 1-#4/0, 1-#6	CU	2"
7	RTU-24-1 ???	3	225 A	225 A	50000 VA	3-#250, 1-#4	CU	2"
8	SPD	3	60 A	60 A	0 VA	--	NA	
9	WH-1	3	100 A	60 A	14000 VA	3-#6, 1-#10	CU	1.75"
10	STAND-BY ATS	3	200 A	150 A	41980 VA	3-#2/0, 1-#2/0, 1-#6	CU	2"
11								
12								
Total Conn. Load:					253499 VA			
Total Amps:					704 A			

Legend:

Load Classification	Connected Load	Demand Factor	Estimated...	Panel Totals
Lighting	7592 VA	125.00%	9491 VA	
Motor	28400 VA	80.00%	22720 VA	Total Conn. Load: 253499 VA
Other	0 VA	0.00%	0 VA	Total Est. Demand: 207330 VA
Power	171449 VA	80.00%	137159 VA	Total Conn. Current: 704 A
Receptacles	41092 VA	80.00%	32874 VA	Total Est. Demand... 575 A

Notes:

Branch Panel: R4

LOCATION: IT/ELEC. 110
SUPPLY FROM: MDP
VOLTAGE: 120/208 Wye-3-4

MOUNTING: Surface
ENCLOSURE: Type 1
MCB RATING: NA

A.I.C. RATING 10K AIC
MAINS TYPE: M.L.O./F.T.L
MAINS RATING: 225 A

TWO 42 CIRCUIT PANELS

CKT	Description	Trip	Poles	Note	A	B	C	Note	Poles	Trip	Description	CKT
1	Receptacles	20 A	1		720 VA				1	20 A	Training 107	2
3						1260 VA			1	20 A	Training 107	4
5	Spare	20 A	1				0 VA	720 VA	1	20 A	Training 107	6
7	Conf 108	20 A	1		540 VA	1080 VA			1	20 A	Conference...	8
9	Roll Call 112	20 A	1			900 VA	720 VA		1	20 A	Roll Call 112	10
11	Roll Call 112	20 A	1			540 VA	360 VA		1	20 A	Roll Call 112	12
13	Roll Call 112	20 A	1		720 VA	360 VA			1	20 A	Roll Call 112	14
15	Training 107	20 A	1			360 VA	540 VA		1	20 A	Training 107	16
17	Training 107	20 A	1			540 VA	360 VA		1	20 A	Training 107	18
19	Spare	20 A	1		0 VA	360 VA			1	20 A	Confrence Rm	20
21	Spare	20 A	1			0 VA	360 VA		1	20 A	Confrence Rm	22
23	Spare	20 A	1				0 VA	180 VA	1	20 A	Copier	24
25	Spare	20 A	1		0 VA	0 VA			1	20 A	Spare	26
27	Washer	20 A	1			180 VA	540 VA		1	20 A	Office 106	28
29	Dryer	20 A	2			2496 VA	1500 VA		1	20 A	EUH-1	30
31	--	--	--		2496 VA	0 VA			1	20 A	Spare	32
33	EF-4	20 A	1			1600 VA	0 VA		1	20 A	Spare	34
35	EF-5	20 A	1			1600 VA	900 VA		1	20 A	Gear Rm 114	36
37	Spare	20 A	1		0 VA	0 VA			1	20 A	Spare	38
39	Spare	20 A	1			0 VA	0 VA		1	20 A	Spare	40
41	Spare	20 A	1				0 VA	0 VA	1	20 A	Spare	42
43	ATU-1	20 A	3		933 VA	333 VA			3	20 A	ATU-2	44
45	--	--	--			933 VA	333 VA		--	--	--	46
47	--	--	--			933 VA	333 VA		--	--	--	48
49	ATU-3	30 A	3		2500 VA	333 VA			3	20 A	ATU-4	50
51	--	--	--			2500 VA	333 VA		--	--	--	52
53	--	--	--			2500 VA	333 VA		--	--	--	54
55	ATU-5	30 A	3		2600 VA	1667 VA			3	20 A	ATU-12	56
57	--	--	--			2600 VA	1667 VA		--	--	--	58
59	--	--	--			2600 VA	1667 VA		--	--	--	60
61	ATU-11, 13	20 A	3		667 VA	0 VA			1	20 A	Spare	62
63	--	--	--			667 VA	0 VA		1	20 A	Spare	64
65	--	--	--			667 VA	0 VA		1	20 A	Spare	66
67	Spare	20 A	1		0 VA	0 VA			1	20 A	Spare	68
69	Spare	20 A	1		0 VA	0 VA			1	20 A	Spare	70
71	Spare	20 A	1			0 VA	0 VA		1	20 A	Spare	72
73	Spare	20 A	1		0 VA	0 VA			3	20 A	Spare	74
75	Spare	20 A	1			0 VA	0 VA		--	--	--	76
77	Spare	20 A	1			0 VA	0 VA		--	--	--	78
79	Spare	30 A	3		0 VA	0 VA			3	30 A	Spare	80
81	--	--	--			0 VA	0 VA		--	--	--	82
83	--	--	--			0 VA	0 VA		--	--	--	84
Total Load:					15309 VA	15493 VA	18229 VA					

Notes:

Load Classification	Connected Load	Demand Factor	Estimated...	Panel Totals
Motor	3200 VA	80.00%	2560 VA	
Power	29620 VA	80.00%	23696 VA	Total Conn. Load: 45972 VA
Receptacles	11652 VA	80.00%	9322 VA	Total Est. Demand: 37078 VA
				Total Conn. Current: 128 A
				Total Est. Demand... 103 A

Branch Panel: R1

LOCATION: BASEMENT
SUPPLY FROM: MDP
VOLTAGE: 120/208 Wye-3-4

MOUNTING: Surface
ENCLOSURE: Type 1
MCB RATING: NA

A.I.C. RATING 22K AIC
MAINS TYPE: M.L.O.
MAINS RATING: 100 A

CKT	Description	Trip	Poles	Note	A	B	C	Note	Poles	Trip	Description	CKT
1	Spare	20 A	1		0 VA	0 VA			1	20 A	Spare	2
3	Recirc Pump	20 A	1			1000 VA	1000 VA		1	20 A	Digital Mix	4
5	Ext Ltgs	20 A	1				480 VA	0 VA	1	20 A	Spare	6
7	Spare	20 A	1		0 VA	0 VA			1	20 A	Spare	8
9	Rec Basement	20 A	1			720 VA	1000 VA		1	20 A	Power	10
11	Power	20 A	1				1000 VA		1	20 A		12
13												14
15												16
17												18
19												20
21	Spare	20 A	1			0 VA	0 VA		1	20 A	Spare	22
23	Spare	20 A	1				0 VA	0 VA	1	20 A	Spare	24
25	Spare	20 A	1		0 VA	0 VA			1	20 A	Spare	26
27	Spare	20 A	1			0 VA	0 VA		1	20 A	Spare	28
29	Spare	20 A	1				0 VA	0 VA	1	20 A	Spare	30
Total Load:					0 VA	3720 VA	1480 VA					

Notes:

Load Classification	Connected Load	Demand Factor	Estimated...	Panel Totals
Power	4000 VA	80.00%	3200 VA	
Receptacles	720 VA	80.00%	576 VA	Total Conn. Load: 5200 VA
				Total Est. Demand: 4376 VA
				Total Conn. Current: 14 A
				Total Est. Demand... 12 A

Branch Panel: R3

LOCATION: FITNESS 127
SUPPLY FROM: MDP
VOLTAGE: 120/208 Wye-3-4

MOUNTING: Flush
ENCLOSURE: Type 1
MCB RATING: NA

A.I.C. RATING 10K AIC
MAINS TYPE: M.L.O.
MAINS RATING: 225 A

CKT	Description	Trip	Poles	Note	A	B	C	Note	Poles	Trip	Description	CKT	
1	Spare	20 A	1		0 VA	360 VA			1	20 A	Fitness 127	2	
3	Cord Drop	20 A	1			180 VA	360 VA		1	20 A	Fitness 127	4	
5	Fitness 127	20 A	1				180 VA	180 VA	1	20 A	Fitness 127	6	
7	Fitness 127	20 A	1		180 VA	180 VA			1	20 A	Fitness 127	8	
9	Fitness 127	20 A	1			180 VA	180 VA		1	20 A	Fitness 127	10	
11	Fitness 127	20 A	1				180 VA	180 VA	1	20 A	Fitness 127	12	
13	Fitness 127	20 A	1		180 VA	180 VA			1	20 A	Fitness 127	14	
15	Toilet 127C	20 A	1			180 VA	360 VA		1	20 A	TV 127	16	
17	Spare	20 A	1				0 VA	540 VA	1	20 A	TV 127	18	
19	Bomb Rm 128	20 A	1		540 VA	720 VA			1	20 A	Bomb Rm 128	20	
21	Bay Fan	20 A	1			1000 VA	4333 VA		3	70 A	Ex. RTU	22	
23	Ice Mkr	20 A	1	GF			180 VA	4333 VA	--	--	--	24	
25	Spare	20 A	1		0 VA	4333 VA			--	--	--	26	
27	ERV-1	20 A	3			1267 VA	1500 VA		GF	1	20 A	EUH-1	28
29	--	--	--				1267 VA	180 VA	1	20 A	Bomb Rm 128	30	
31	--	--	--			1267 VA	180 VA		1	20 A	BottleFiller	32	
33	Spare	20 A	1			0 VA	0 VA		1	20 A	Spare	34	
35	Spare	20 A	1				0 VA	0 VA	1	20 A	Spare	36	
37	Spare	20 A	1		0 VA	0 VA			1	20 A	Spare	38	
39	Spare	20 A	1			0 VA	0 VA		1	20 A	Spare	40	
41	Spare	20 A	1				0 VA	0 VA	1	20 A	Spare	42	
Total Load:					8120 VA	9540 VA	7220 VA						

Notes:

Load Classification	Connected Load	Demand Factor	Estimated...	Panel Totals
Motor	1000 VA	80.00%	800 VA	
Power	16800 VA	80.00%	13440 VA	Total Conn. Load: 23800 VA
Receptacles	4500 VA	80.00%	3600 VA	Total Est. Demand: 19340 VA
				Total Conn. Current: 66 A
				Total Est. Demand... 54 A

Branch Panel: SB

LOCATION: FORENSICS WORK...
SUPPLY FROM: ATS
VOLTAGE: 120/208 Wye-3-4

MOUNTING: Surface
ENCLOSURE: Type 1
MCB RATING: NA

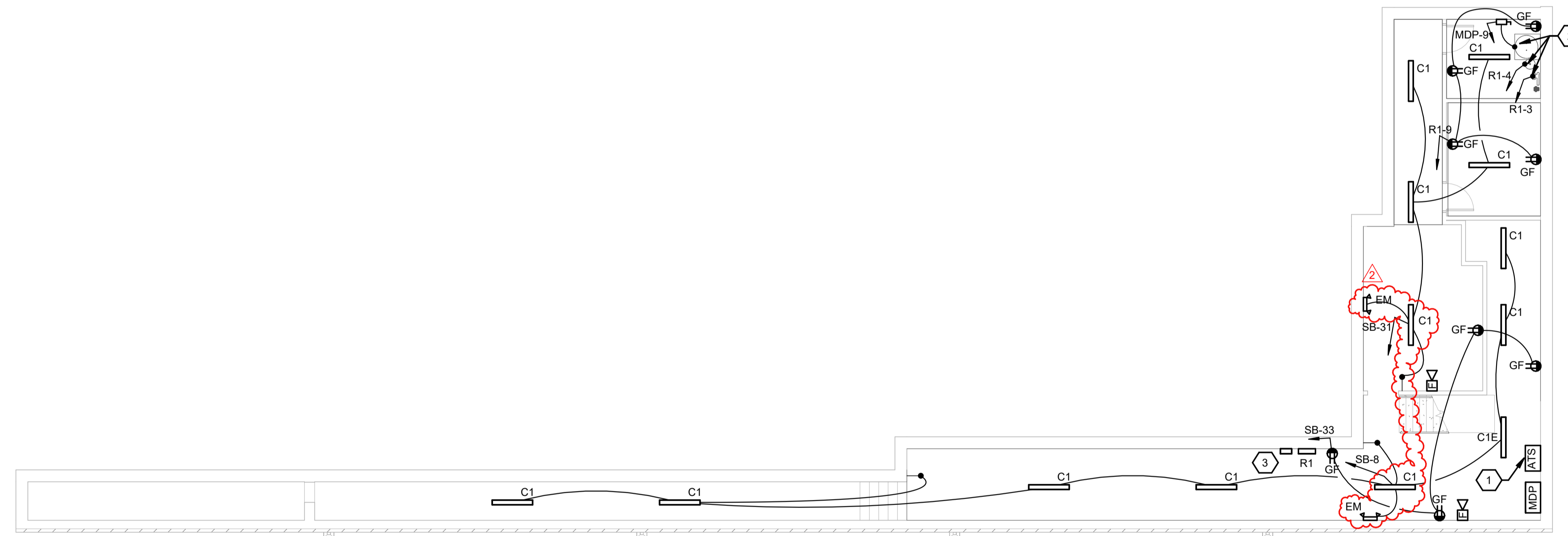
A.I.C. RATING 22K AIC
MAINS TYPE: M.L.O.
MAINS RATING: 150 A

CKT	Description	Trip	Poles	Note	A	B	C	Note	Poles	Trip	Description	CKT
1	Lighting	20 A	1		1019 VA	1214 VA			1	20 A	Lighting	2
3	Lighting	20 A	1			1201 VA	1109 VA		1	20 A	Lighting	4
5	Lighting	20 A	1				1331 VA	339 VA	1	20 A	Ext Ltgs	6
7	Bay 126	20 A	1		1780 VA	282 VA			1	20 A	Lighting	8
9	Forensics 124	20 A	1			360 VA	100 VA		1	20 A	CO/NO	10
11	Forensics 124	20 A	1				1080 VA	360 VA	1	20 A	Forensics 124	12
13	Break 119	20 A	1		540 VA	360 VA			1	20 A	Forensics 124	14
15	Office 122/120	20 A	1			900 VA	540 VA		1	20 A	Forensics 121	16
17	Bomb Rm 128	20 A	1				1780 VA	180 VA	1	20 A	Rec	18
19	I.T. Room	20 A	1		720 VA	720 VA			1	20 A	I.T. Room	20
21	Rec IT/ELEC...	20 A	1			180 VA	1260 VA		1	20 A	Battery Charge	22
23	Rec 102/103	20 A	1				900 VA	1600 VA	1	20 A	Motor	24
25	GUH	20 A	1		1600 VA	1600 VA			1	20 A	EF-1	26
27	GUH	20 A	1			1600 VA	1600 VA		1	20 A	Motor	28
29	Fume Hood	20 A	1				1000 VA	4000 VA	3	60 A	Motor	30
31	Lighting	20 A	1		177 VA	4000 VA			--	--	--	32
33	Rec Basement	20 A	1			720 VA	4000 VA		--	--	--	34
35	Office 106/105	20 A	1				1440 VA	720 VA	1	20 A	Office 104/100	36
37	IT/ELEC. 110	20 A	1		1000 VA				2	20 A	Power	38
39	Power	20 A	2			0 VA	0 VA		2	20 A	Power	

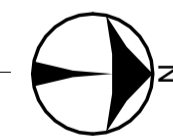
1 | 2 | 3 | 4 | 5 | 6 | 7

A
B
C
D
E
F

- CONSTRUCTION NOTES**
1. AUTOMATIC TRANSFER SWITCH. ALTERNATE E-1.
 2. PROVIDE FUSED DISCONNECT FOR 208V-3PH POWER CONNECTION TO WATER HEATER, 120V POWER CONNECTION TO RECIRC PUMP AND 120V POWER TO DIGITAL MIXING VALVE. REFER TO DETAIL 8 ON SHEET P3.1.
 3. PROVIDE 4-POLE LIGHTING CONTACTOR (WITH PHOTOCELL CONTROL) FOR CONTROL OF EXTERIOR LIGHTING CIRCUITS.



BASEMENT LIGHTING, POWER AND SYSTEMS PLAN
 SCALE: 1/8" = 1'-0"



SCALE: 1/8"=1'-0"

NAUMAN & ZELINSKI LLC.
 204 S. Ludlow Street Suite 400 Dayton, Ohio 45402
 Phone: (937) 223-9011 Fax: (937) 223-3464

App Architecture
 creative focused design
 615 Woodside Drive, Englewood, Ohio 45322
 T 937.832.3696 F 937.832.3696
 www.app-arch.com



JEFFERY D. ZELINSKI, LICENSE #63822
 EXPIRATION DATE 12/31/2025

DAYTON POLICE DEPARTMENT
1ST DISTRICT EAST PATROL
 417 East Helena St. Dayton, Ohio 45404

NO.	DATE	DESCRIPTION
1	11/17/25	FOR CONSTRUCTION
2	12/12/25	ADDENDUM 2

DATE	11/17/25
JOB NO.	4209.00
DRAWN	TR
CHECKED	JDZ

COPYRIGHT © 2024 - App Architecture, Inc.
 TITLE
**BASEMENT LIGHTING,
 POWER AND SYSTEMS
 PLAN**

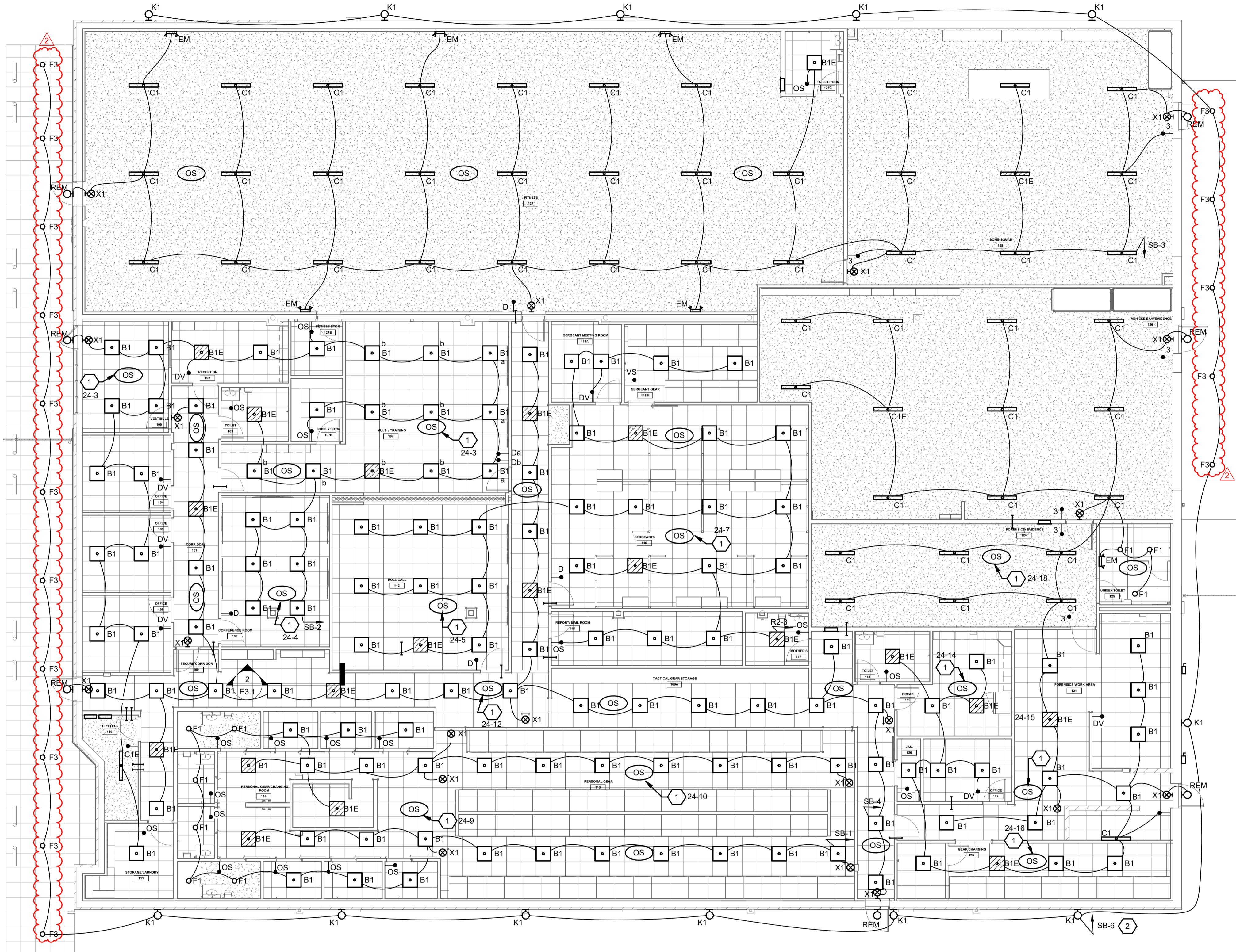
SHEET NO.
E2.0

1 | 2 | 3 | 4 | 5 | 6 | 7

12/11/2025 10:51:26 PM

CONSTRUCTION NOTES

1. PROVIDE RELAY WITH AUXILIARY CONTACT FOR CONTROL INPUT TO DDR FOR OCCUPIED MODE/OPERATION OF VAV BOX SERVING THIS AREA. COORDINATE REQUIREMENTS WITH HVAC CONTRACTOR.
2. CIRCUIT EXTERIOR LIGHTS THRU EXTERIOR LIGHTING CONTACTOR IN BASEMENT.



FIRST FLOOR LIGHTING PLAN
 SCALE: 1/8" = 1'-0"



NAUMAN & ZELINSKI LLC.
 204 S. Ludlow Street Suite 400 Dayton, Ohio 45402
 Phone: (937) 253-9011 Fax: (937) 253-3645

App Architecture
 creative focused design
 615 Woodside Drive, Englewood, Ohio 45322
 T 937.832.3696 F 937.832.3696
 www.app-arch.com

STATE OF OHIO
 JEFFREY D. ZELINSKI
 63822
 REGISTERED PROFESSIONAL ENGINEER
 JEFFREY D. ZELINSKI, LICENSE #63822
 EXPIRATION DATE 12/31/2025

DAYTON POLICE DEPARTMENT
1ST DISTRICT EAST PATROL
 417 East Helena St. Dayton, Ohio 45404

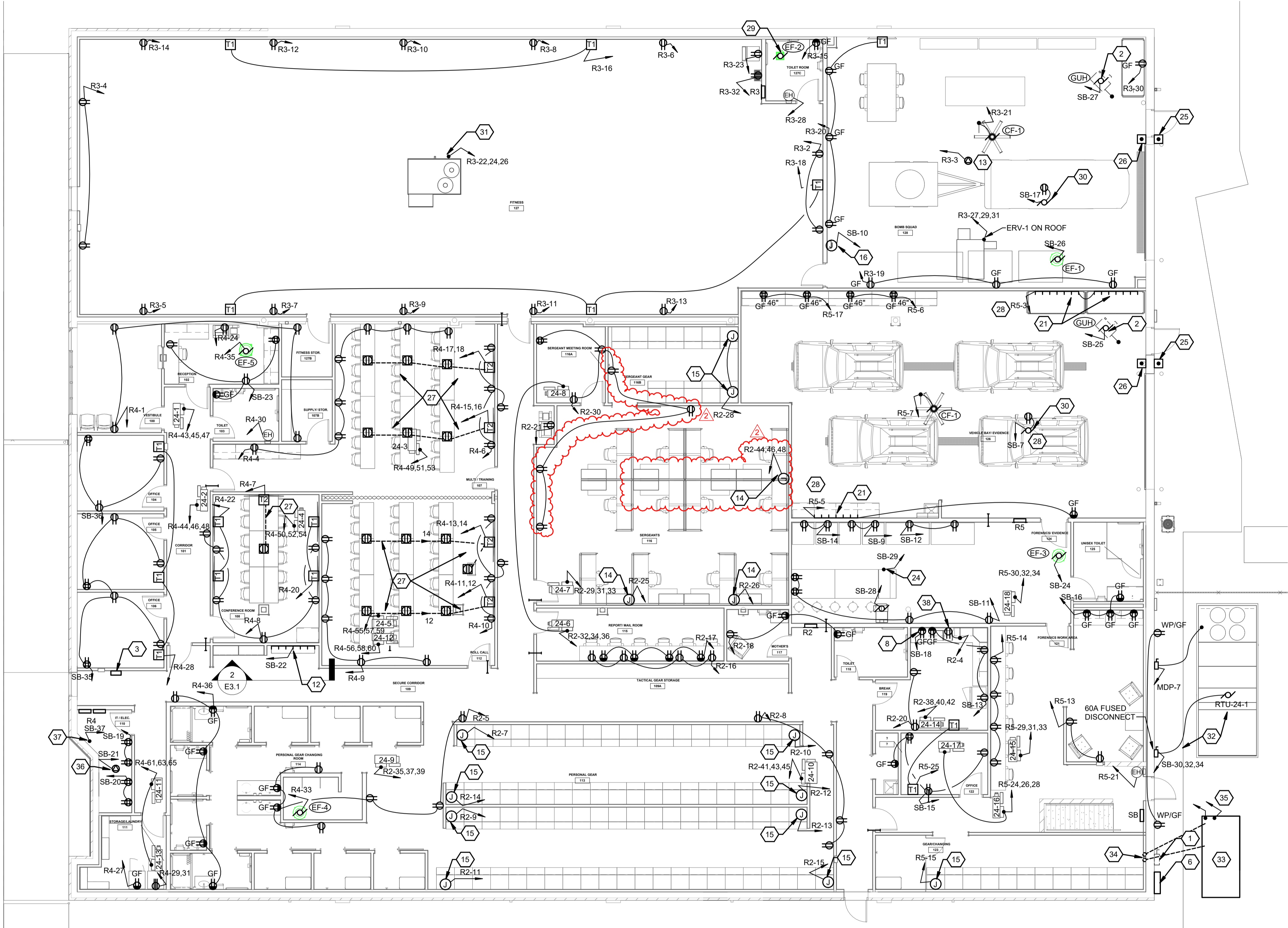
NO.	DATE	DESCRIPTION
1	11/17/25	FOR CONSTRUCTION
2	12/12/25	ADDENDUM 2

DATE 11/17/25
 JOB NO. 4209.00
 DRAWN TR
 CHECKED JDZ

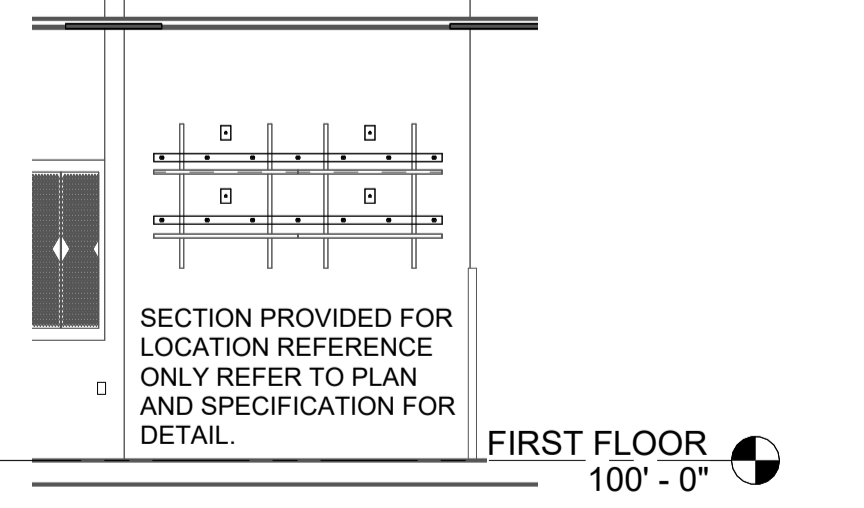
COPYRIGHT © 2024 - App Architecture, Inc.
TITLE
FIRST FLOOR LIGHTING PLAN

SHEET NO.
E2.1

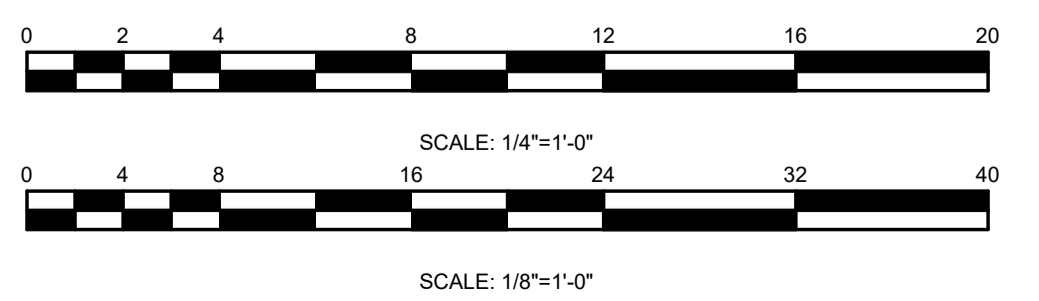
12/11/2025 12:51:28 PM



FIRST FLOOR POWER PLAN
SCALE: 1/8" = 1'-0"

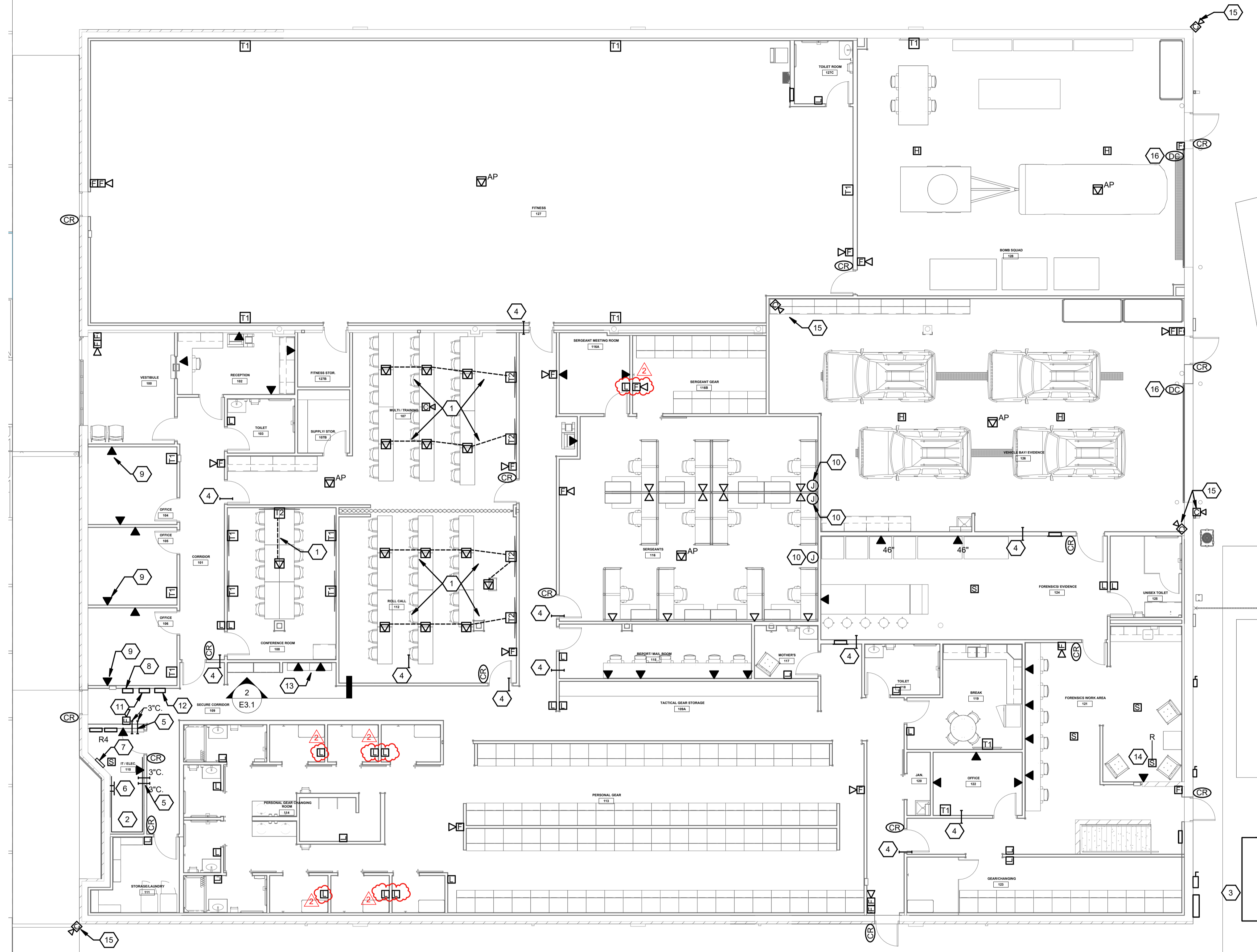


**POWER AND SYSTEMS
BATTERY CHARGER ELEVATION**
SCALE: 1/4" = 1'-0"



- CONSTRUCTION NOTES**
- PORTABLE GENERATOR CONNECTION BOX, FURNISHED UNDER BASE BID.
 - PROVIDE 120V POWER TO GAS UNIT HEATER FAN.
 - FIRE ALARM REMOTE ANNUNCIATOR.
 - MAIN GROUND BAR.
 - UNDERGROUND SERVICE FEEDERS FROM UTILITY TRANSFORMER.
 - UTILITY CT CABINET AND METER PER AES.
 - INSTALL AND WIRE DOOR OPERATOR BUTTON FURNISHED BY EQUIPMENT SUPPLIER. (OPERATOR TO BE PROGRAMMED FOR AUTO-CLOSE FEATURE AFTER 30 SECOND DELAY)
 - COORDINATE RECEPTACLE MOUNTING HEIGHT, LOCATION, WITH MICROWAVE SHELF. REFER TO ARCHITECTURAL ELEVATIONS.
 - DEDICATED 20A-120V CIRCUIT FOR WORKOUT EQUIPMENT.
 - GENERATOR DOCKING STATION. REFER TO DETAIL, SHEET E0.3 AND SPECIFICATIONS.
 - PROVIDE GFCI BREAKER FOR WASHER CIRCUIT.
 - COORDINATE RECEPTACLE AND DATA MOUNTING HEIGHTS AND LOCATIONS WITH CASEWORK ELEVATIONS. PROVIDE PLUGMOLD AND 2 DATA OUTLETS IN EACH OPEN SHELVING UNIT FOR RADIO BATTERY CHARGING. REFER TO DETAIL ON THIS SHEET FOR LOCATION
 - FLUSH MOUNTED TWISTLOCK RECEPTACLE AT CEILING STRUCTURE FOR SERVICE CORD DROP TO VEHICLE BAY.
 - PROVIDE HARDWIRED CONNECTION TO FURNITURE SYSTEM WHIP. COORDINATE INSTALLATION REQUIREMENTS WITH FURNITURE VENDOR.
 - PROVIDE HARDWIRED CONNECTION TO SECURE LOCKER SYSTEM WHIP. COORDINATE INSTALLATION REQUIREMENTS WITH LOCKER VENDOR.
 - PROVIDE 120V POWER TO CO/NOX SYSTEM DETECTION SYSTEM (FURNISHED BY H.C.). COORDINATE LOCATION WITH H.C.
 - PROVIDE 120V 1PH POWER FOR KRONOS TIME CLOCK
 - PROVIDE 120V 1PH POWER FOR DOOR OPERATOR.
 - COMMUNICATIONS GROUND BAR.
 - PROVIDE 3/4" PLYWOOD BACKBOARD CONTINUOUS ACROSS 3 WALLS OF SERVER/IT ROOM, 6" A.F.F TO 8'-6" A.F.F.
 - COORDINATE LOCATION AND MOUNTING HEIGHT OF PLUGMOLD WITH SHELVING UNITS.
 - PROVIDE 120V POWER TO FIRE ALARM PANEL IN I.T. ROOM.
 - PROVIDE 120V 30A RECEPTACLE FOR RACK/UPS. FINAL COORDINATE LOCATION/TYPED WITH OWNER/EQUIPMENT SUPPLIER.
 - PROVIDE 120V 1PH CORD DROP WITH NEMA 5-20R RECEPTACLE BOX FROM CEILING. PROVIDE STRAIN RELIEF DEVICE FOR CORD DROP. COORDINATE SUSPENSION HEIGHT WITH HOOD.
 - PROVIDE ROUGH-IN FOR KEYPAD SWITCH FURNISHED BY EQUIPMENT SUPPLIER, INSTALLED BY E.C.
 - COORDINATE INSTALLATION OF DOOR OPERATOR BUTTON, FURNISHED BY EQUIPMENT SUPPLIER, INSTALLED BY E.C..
 - PROVIDE TWO GANG FLOOR BOX WITH .75" CONDUIT TO TV WALL BOX FOR POWER ROUTING. COORDINATE LOCATIONS AND COVER PLATES WITH OWNER.
 - CIRCUIT TO GROUND-FAULT BREAKER.
 - CONNECT EXHAUST FAN TO LIGHTING SWITCH FOR 'ON'/'OFF' CONTROL WITH LIGHTS.
 - PROVIDE 120V 1PH CONNECTION TO GARAGE DOOR OPENER.
 - PROVIDE NEW 208V 3PH CONNECTION TO EXISTING ROOF TOP UNIT. UTILIZE EXISTING PATH INTO BUILDING.
 - CIRCUIT FOR RTU-24-1 FOR FANS /HEAT/CONTROLS POWERED FROM STANDBY PANEL 'SB'.
 - STANDBY GENERATOR FURNISHED UNDER ALTERNATE E-1.
 - FEEDER FROM GENERATOR TO A.T.S. IN BASEMENT. PROVIDE START CIRCUIT WIRING AND ANNUNCIATION/ALARM WIRING FROM GENERATOR TO A.T.S. AND TO REMOTE ANNUNCIATOR PER MANUFACTURER REQUIREMENTS.
 - PROVIDE BATTERY CHARGER AND BLOCK HEATER CIRCUITS TO GENERATOR FROM PANEL 'R1'.
 - COORDINATE CORD DROP TO DATA RACK. SEE TECHNOLOGY PLAN.
 - PROVIDE 120V 1PH CONNECTION TO FIRE ALARM PANEL.
 - PROVIDE RECEPTACLE FOR GARBAGE DISPOSAL IN BASE CABINET AND SWITCH ABOVE COUNTER AS SHOWN ON PLAN.

ISSUE		
NO.	DATE	DESCRIPTION
1	11/17/25	FOR CONSTRUCTION
2	12/12/25	ADDENDUM 2



FIRST FLOOR SYSTEMS PLAN
SCALE: 1/8" = 1'-0"



- ### CONSTRUCTION NOTES
1. PROVIDE TWO GANG FLOOR BOX WITH 1.25" CONDUIT TO TV WALL BOX FOR A/V CABLING (BY OWNER). COORDINATE LOCATIONS AND COVER PLATES WITH OWNER.
 2. PROVIDE 3/4" PLYWOOD, 3 WALLS, FOR DATA, IT EQUIPMENT.
 3. REFER TO SITE PLAN FOR ROUTING OF SERVICE ENTRANCE CONDUIT TO UTILITY POLE
 4. PROVIDE 3" CONDUIT STUB ABOVE DRYWALL CEILING FOR LOW VOLTAGE SYSTEMS CABLING.
 5. 4" CONDUITS STUBBED FROM IT ROOM TO ABOVE FIRST FLOOR CEILING FOR SYSTEMS CABLING.
 6. PROVIDE TELECOMMUNICATIONS GROUND BAR IN I.T. ROOM PROVIDE #4 A.W.G. GROUND TO MAIN GROUND BAR IN ELECTRIC SERVICE ROOM.
 7. FIRE ALARM PANEL IN I.T. ROOM.
 8. PROVIDE 1-GANG BOX WITH .75" CONDUIT TO ABOVE ACCESSIBLE CEILING FOR DATA DROP TO KRONOS TIME CLOCK.
 9. PROVIDE ADDITIONAL 1.25" DATA CONDUIT TO ABOVE CEILING FOR HDMI CONNECTION FROM DESK COMPUTER TO TV WALL BOX. PROVIDE HDMI CONNECTION IN FACEPLATE
 10. PROVIDE 2-GANG BOX WITH TWO - 1.25" CONDUIT TO ABOVE ACCESSIBLE CEILING FOR DATA DROP TO FURNITURE SYSTEM.
 11. FIRE ALARM ANNUNCIATOR PANEL.
 12. GENERATOR ANNUNCIATOR PANEL.
 13. COORDINATE RECEPTACLE AND DATA MOUNTING HEIGHTS AND LOCATIONS WITH CASEWORK ELEVATIONS. PROVIDE PLUGMOLD AND 2 DATA OUTLETS IN EACH OPEN SHELVING UNIT FOR RADIO BATTERY CHARGING. REFER TO DETAIL 1 ON SHEET E3.1 FOR COORDINATION
 14. DUCT MOUNTED SMOKE DETECTOR IN RETURN AIR DUCT.
 15. EXISTING CAMERA TO REMAIN. PROVIDE NEW CABLING TO NEW I.T. ROOM AT DATA RACK.
 16. PROVIDE ADDITIONAL CONDUIT ROUGH-IN FOR DOOR CONTACT WIRING TO OVERHEAD DOOR.

- ### TECHNOLOGY NOTES
- A. THE E.C. SHALL PROVIDE DATA SYSTEM CABLING AND TERMINATIONS FROM POINT OF USE (WALL JACKS CAMERAS AND WIRELESS ACCESS POINTS) TO OWNER'S DATA RACK IN I.T. ROOM. CAMERAS, WIRELESS ACCESS POINTS AND RACK EQUIPMENT FURNISHED BY OWNER.
 - B. THE E.C. SHALL PROVIDE THE FOLLOWING IN IT ROOM:
 - APC 2 POST NETWORK RACK (45U NETSHELTER) 20.2"X14.8"X84.1" 2 POST. SECURED TO FLOOR
 - PANDUIT NETKEY PATCH PANELS 48 PORT, TOTAL OF 3 FOR RACK
 - 30A-120V CIRCUIT. NEMA L5-30R TWISTLOCK RECEPTACLE ON CORD DROP FROM CEILING TO BOTTOM OF RACK FOR UPS. (UPS BY OWNER).

- ### TECHNOLOGY CABLING NOTES
- A. WALL OR WORKSTATION JACK.
 - TERMINATE IN TWO GANG BOX, RJ-45 JACK
 - 18" OR 46" MH IN FIXED WALLS EXCEPT WHERE NOTED OTHERWISE
 - WALL OR BASE COVERPLATES TO WHITE PLASTIC WITH CLEAR PLASTIC LABEL FIELDS INDICATING PANEL AND TERMINAL. (E.G. - "B3", PATCH PANEL B, TERMINAL3)
 - (MOUNT VERICAL (WALL) WITH LABEL FIELD(S) ABOVE JACK, APPROPRIATELY ORIENTED.
 - B. DATA CABLE DEDICATED HOME RUN, ROUTE CABLE TO I.T. ROOM. TERMINATE AT NEW PATCH PANEL IN DATA RACK.
 - C. ALL DATA CABLING TO BE TERMINATED AT BOTH ENDS AND TESTED.
 - D. ALL CABLING TO BE CATEGORY/COLOR/JACK/CODED AS NOTED BELOW.
 - E. SUBMIT IDENTIFICATION NUMBERING SYSTEM FOR REVIEW WITH OWNER PRIOR TO INSTALLATION.

- ### TECHNOLOGY LEGEND
- ▼ TWO DATA JACK CAT 6a, BLUE & WHITE JACKET CABLE, PLENUM RATED, NETKEY RJ45 JACK (WHITE WITH WHITE COVERPLATE) ACCEPTABLE MANUFACTURER TO BE VERIFIED WITH OWNER PRIOR TO RELEASE. 18" M.H. UNLESS NOTED OTHERWISE IN 4" SQUARE BOX WITH SINGLE-GANG TRIM RING AND 1" CONDUIT TO CABLE MANAGEMENT ABOVE CORRIDOR CEILING (J-HOOKS).
 - AP TWO WIRELESS ACCESS POINT DATA JACK CAT 6A, ORANGE JACKET CABLE PLENUM RATED, RJ45 MALE JACK. COIL AND SUSPEND SPARE CABLE LENGTH (MINIMUM 10') AT LOCATIONS INDICATED ON PLAN. BUNDLE COILED CABLE WITH VELCRO STRAPS.
 - CR SURVEILLANCE CAMERA SYSTEM CAT 6A, YELLOW JACKET CABLE, PLENUM RATED, RJ45 MALE JACK.
 - ▼ TWO DATA JACK, CAT 6A, BLUE & WHITE JACKET CABLE, PLENUM RATED, NETKEY RJ45 JACK (WHITE WITH FURNITURE SYSTEM COVERPLATE) ACCEPTABLE MANUFACTURER TO BE VERIFIED WITH OWNER PRIOR TO RELEASE. MOUNTED IN BASE OF FURNITURE SYSTEM. ROUTE CABLING THRU FURNITURE SYSTEM TO WALL BOX INDICATED TO ABOVE ACCESSIBLE CORRIDOR CEILING TO IT ROOM.

APP Architecture
creative focused design

615 Woodside Drive, Englewood, Ohio 45322
T 937.836.8898 F 937.832.3696
www.app-arch.com

JEFFERY D. ZELINSKI, LICENSE #63822
EXPIRATION DATE 12/31/2025

DAYTON POLICE DEPARTMENT

1ST DISTRICT EAST PATROL

417 East Helena St. Dayton, Ohio 45404

ISSUE		
NO.	DATE	DESCRIPTION
11/17/25		FOR CONSTRUCTION
2	12/12/25	ADDENDUM 2

DATE 11/17/25

JOB NO. 4209.00

DRAWN TR

CHECKED JDZ

COPYRIGHT © 2024 - App Architecture, Inc.

TITLE
FIRST FLOOR SYSTEM PLAN

SHEET NO.
E4.1

12/11/2025 10:51:30 PM